



AROUND THE WORLD IN 50 WAYS

FOR CHARLOTTE AND BEN - DS
FOR JOHN - FC

WRITTEN BY
DAN SMITH

ILLUSTRATED BY
FRANCES CASTLE

HOW TO USE THIS BOOK

HI, MY NAME'S ZAK. WELCOME TO 'AROUND THE WORLD IN 50 WAYS'. IF YOU THINK THIS IS A BOOK WHERE YOU OPEN AT PAGE 1 AND READ RIGHT THROUGH TO THE END, THEN THINK AGAIN.



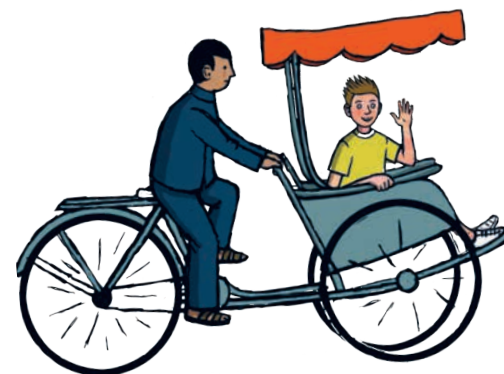
IN THIS BOOK, **YOU** ARE THE MAIN CHARACTER. THE AIM IS TO TAKE A TRIP AROUND THE WORLD, STARTING AND ENDING IN LONDON.



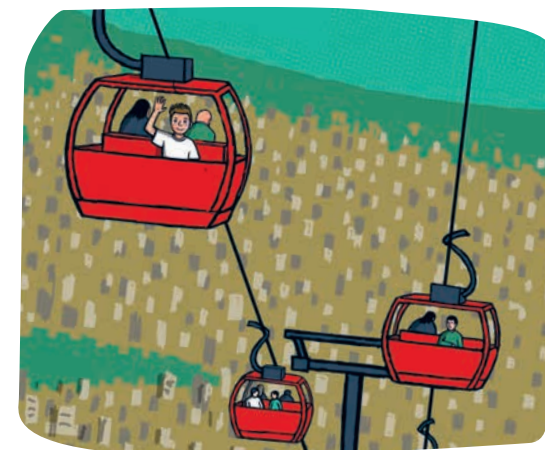
YOU'RE IN CHARGE HERE, SO YOU CHOOSE WHERE TO GO AND WHAT TO DO NEXT!



THERE ARE MANY DIFFERENT WAYS TO GET FROM A TO B. YOU'LL TAKE PLANE RIDES OF COURSE, BUT EVER BEEN IN A TUK-TUK, A BICYCLE RICKSHAW OR A JEEPNEY? THIS IS WHERE YOU GET TO HAVE FUN!



YOUR TRIP IS GUARANTEED TO BE GREAT FUN EVEN WHEN IT GOES WRONG! GO BACK TO THE BEGINNING AND HAVE A COMPLETELY DIFFERENT ADVENTURE. JUST KEEP GOING UNTIL YOU FIND THE RIGHT PATH.



SO, ARE YOU READY TO JOIN ME ON THE TRIP OF A LIFETIME? THEN STOP HANGING AROUND!

TURN THE PAGE AND LET'S BEGIN.



YOU'LL VISIT INCREDIBLE CITIES ALONG THE WAY AND TRY THINGS YOU'VE NEVER DONE BEFORE. NOW'S YOUR CHANCE TO SURF IN HONOLULU, RIDE A CAMEL IN MARRAKECH, SNORKEL IN QUEENSLAND OR TAKE A TAXI IN NEW YORK.

PICK THE RIGHT ROUTE AND YOU'LL MAKE IT ALL THE WAY AROUND THE PLANET AND SAFELY BACK TO LONDON. BUT BE WARNED, TAKE A WRONG TURN AND YOUR JOURNEY WILL COME TO A



IF IT DOES, DON'T PANIC!

GO TO **P6**

TICKETS, PLEASE!
ALL ABOARD THE...

EUROSTAR

WE ARE ON BOARD ONE OF THE 400 EUROSTAR TRAINS THAT SHUTTLE PASSENGERS AND VEHICLES BACK AND FORTH BETWEEN THE UK AND MAINLAND EUROPE EVERY DAY. THE TRAINS PASS THROUGH THE CHANNEL TUNNEL, WHICH RUNS FOR 38KM (23.5MI) BENEATH THE ENGLISH CHANNEL.

THE TUNNEL

THE IDEA FOR A CHANNEL TUNNEL WAS FIRST SUGGESTED IN 1802 BUT IT WASN'T UNTIL 1988 THAT BUILDING WORK BEGAN. THE TUNNEL WAS OPENED SIX YEARS LATER AND IS THE LONGEST UNDERSEA TUNNEL IN THE WORLD.

WHERE NEXT?

GOODBYE LONDON AND HELLO MAINLAND EUROPE! BUT AS WE SPEED TOWARDS THE CHANNEL TUNNEL, WHICH WAY WILL WE GO?

TRAVEL 2 HRS 15 MINS

GO TO **P130**

TRAVEL 2 HRS

GO TO **P62**

OVER ONE MILLION PET CATS AND DOGS HAVE TRAVELLED ON THE EUROSTAR!

HIT THE ROAD IN A...

HIRE CAR

WE'RE HEADING OFF ON THE ULTIMATE ROAD TRIP IN A GAS-GUZZLING HIRE CAR. I'VE FILLED UP THE TANK AND CHECKED THE TYRES, SO WE'RE ALL SET FOR OUR NEXT ADVENTURE. PUT YOUR FAVOURITE TUNES ON THE CAR STEREO AND GET READY TO COVER SOME SERIOUS MILEAGE.



AMERICAN DINER

HOW ABOUT WE FIND A ROADSIDE DINER? THEN PARK OUTSIDE AND REFUEL INSIDE! WHAT WILL YOU HAVE? EGGS AND BACON AND A STACK OF PANCAKES? DEEP-FRIED CHICKEN OR SMOKY BARBECUED PORK? MAKE MINE A BURGER, FRIES AND A SODA, THEN I'LL BE READY TO GET BEHIND THE WHEEL AGAIN!



IN 1984, SWISS COUPLE EMIL AND LILIANA SCHMID BEGAN THE LONGEST CAR JOURNEY IN HISTORY. THEY ARE STILL GOING, HAVING DRIVEN NEARLY 805,000KM (500,000MI) IN THE SAME VEHICLE!

31 HRS

GO TO **P102**

20 HRS

GO TO **P124**

WHERE NEXT?

THAT ALL DEPENDS ON HOW LONG YOUR ROAD TRIP TAKES AND HOW MANY STOPS YOU MAKE...

TAKE COVER IN...

KYOTO!

WE'VE ARRIVED IN ONE OF JAPAN'S PRETTIEST CITIES. WHERE OTHER PARTS OF THE COUNTRY LOVE TO BE CUTTING EDGE AND MODERN, KYOTO IS A LITTLE MORE OLD FASHIONED. IT'S SAID THAT THERE ARE 1,600 BUDDHIST TEMPLES HERE, SOME DATING BACK AS FAR AS THE YEAR 603. AS WELL AS ALL THE BEAUTIFUL, RELAXING GARDENS, WE'LL BE ABLE TO BUY TRADITIONAL JAPANESE FOOD LIKE TOFU, FISH, PICKLES AND TEA.

UH OH! WHAT'S THAT THUNDER CRACK? WHERE IS EVERYONE GOING? OH DEAR, THE WEATHER FORECAST SAYS THERE'S A TYPHOON HEADING TOWARDS THE CITY. WE'D BEST GET UNDER COVER UNTIL IT'S OVER. I'M AFRAID THAT MEANS OUR JOURNEY HAS COME TO AN END. IT'S BACK TO THE START FOR YOU. BETTER LUCK NEXT TIME!

KYOTO WAS THE CAPITAL OF IMPERIAL JAPAN FOR OVER 1,000 YEARS.

DEAD END!

EXPERIENCE THE JOY OF...

JOHANNESBURG!

ABOUT 40% OF ALL
THE GOLD EVER
FOUND COMES FROM
THE AREA AROUND
JOHANNESBURG!

WHERE NEXT?

THERE'S SO MUCH TO
SEE AND DO IN SOUTH
AFRICA, BUT THE PLANE
IS WAITING.

FLY 11 HRS 30 MINS

GO
TO **P30**

FLY 15 HRS 30 MINS

GO
TO **P156**

TAKE A TOUR OF JOHANNESBURG,
SOUTH AFRICA'S LARGEST CITY AND THE
CAPITAL OF GAUTENG PROVINCE.
JO'BURG (AS IT'S KNOWN BY THE LOCALS)
HAS MOVED ON FROM ITS PAST WHEN
THERE WERE DIFFERENT RULES
FOR PEOPLE DEPENDING ON THE
COLOUR OF THEIR SKIN. TODAY,
SPECTACULAR BUILDINGS AND
HIP NEW NEIGHBOURHOODS
ARE SPRINGING UP
EVERYWHERE. COME
WITH ME AND EXPLORE
THE NEW SOUTH
AFRICA!

THE CRADLE OF HUMANKIND

JUST AN HOUR FROM JO'BURG BY CAR AND WE'RE
AT MAROPENG, AN AREA NICKNAMED THE CRADLE
OF CIVILIZATION.

MAROPENG

OUR HUMAN ANCESTORS HAVE LIVED IN THIS
PLACE FOR OVER 4 MILLION YEARS! SCIENTISTS
HAVE FOUND LOADS OF AMAZING FOSSILS IN THE
ANCIENT STERKFORTEIN CAVES - OVER 90,000
OF THEM - AND MORE THAN 9,000 STONE
TOOLS USED BY EARLY HUMANS.

FEEL ALIVE IN...

ALASKA!

WELCOME TO THE LARGEST STATE IN THE USA NOT MANY PEOPLE LIVE HERE, WHICH MEANS THERE'S A LOT OF SPACE TO ENJOY.

IF YOU LIKE MOUNTAINS AND ICY WILDERNESS, THEN ALASKA IS JUST THE PLACE FOR YOU. WE WON'T BE ENTIRELY ON OUR OWN THOUGH BECAUSE IT'S TEEMING WITH WILDLIFE. JUST TRY NOT TO BUMP INTO A BROWN BEAR – THEY'RE HUGE AND NOT VERY CUDDLY!

TONGASS FOREST

WHEN YOU'VE SEEN ENOUGH MOUNTAINS AND ICY GLACIERS, WE CAN HEAD FOR TONGASS – THE BIGGEST NATIONAL FOREST IN THE USA THERE'S NO BETTER WAY TO EXPLORE THIS NATURAL WORLD THAN WHIZZING ALONG A ZIP WIRE, HIGH ABOVE THE TREETOPS. WHHHHEEEEEEE!

THE UNITED STATES BOUGHT ALASKA FROM RUSSIA IN 1867 FOR JUST TWO CENTS PER ACRE. WHAT A BARGAIN!

WHERE NEXT?

WE'LL FLY OUT OF ANCHORAGE IN ALASKA. HOW LONG DO YOU WANT TO BE IN THE AIR?

FLY 6 HRS 30 MINS

GO TO **P54**

FLY 21 HRS

GO TO **P36**

ENJOY THE WARM WELCOME OF...

WELLINGTON!

WE'VE FOUND OUR WAY TO NEW ZEALAND - WELLINGTON TO BE PRECISE - THE WORLD'S MOST REMOTE AND SOUTHERLY CAPITAL CITY! IT'S A BEAUTY TOO, BUILT ON THE SHORES OF NORTH ISLAND, ONE OF NEW ZEALAND'S TWO MAIN ISLANDS. WE'LL SEE THE AMAZING HARBOUR, GOLDEN BEACHES, LUSH GREEN HILLSIDES AND SNOW-CAPPED MOUNTAINS. BRING A WARM COAT THOUGH - IT GETS WINDY HERE!



ZEALANDIA

WELLINGTON HAS ALL THE THINGS YOU'D EXPECT IN A BIG CITY. THE MUSEUM OF NEW ZEALAND, 'TE PAPA TONGAREWA' FOR INSTANCE, TELLS THE HISTORY OF NEW ZEALAND, INCLUDING ITS NATIVE MAORI PEOPLE. BUT THIS IS A COUNTRY BEST ENJOYED OUTDOORS, SO LET'S HEAD FOR THE ZEALANDIA WILDLIFE RESERVE. HOPEFULLY WE'LL SPOT A KIWI - A VERY SHY, FLIGHTLESS BIRD, AND NEW ZEALAND'S NATIONAL SYMBOL.



IN 1893 NEW ZEALAND BECAME THE FIRST COUNTRY TO GIVE WOMEN THE VOTE.

FLY 2 HRS,
SAIL 2 WEEKS!

GO
TO **P24**

WHERE NEXT?

YOU'RE SAD TO LEAVE THIS AMAZING COUNTRY, BUT YOU NEED TO PRESS ON.

FLY 4 HRS

GO
TO **P44**

ACKNOWLEDGEMENTS

PUBLISHING DIRECTOR
COMMISSIONING EDITORS

EDITOR
ASSISTANT EDITOR
AUTHOR
ARTIST
ART DIRECTOR
DESIGNER
PRINT PRODUCTION

PIERS PICKARD
JEN FEROZE
CATHARINE ROBERTSON
JACQUELINE MCCANN
CHRISTINA WEBB
DAN SMITH
FRANCES CASTLE
ANDY MANSFIELD
KIM HANKINSON
LARISSA FROST
NIGEL LONGUET

PUBLISHED IN FEBRUARY 2018 BY
LONELY PLANET GLOBAL LIMITED
CRN 554153
ISBN 9781786577559
WWW.LONELYPLANETKIDS.COM
© LONELY PLANET 2018

10987654321

PRINTED IN MALAYSIA

ALL RIGHTS RESERVED. NO PART OF THIS PUBLICATION MAY BE REPRODUCED, STORED IN A RETRIEVAL SYSTEM OR TRANSMITTED IN ANY FORM BY ANY MEANS, ELECTRONIC, MECHANICAL, PHOTOCOPYING, RECORDING OR OTHERWISE EXCEPT BRIEF EXTRACTS FOR THE PURPOSE OF REVIEW. WITHOUT THE WRITTEN PERMISSION OF THE PUBLISHER, LONELY PLANET AND THE LONELY PLANET LOGO ARE TRADEMARKS OF LONELY PLANET AND ARE REGISTERED IN THE US PATENT AND TRADEMARK OFFICE AND IN OTHER COUNTRIES.

ALTHOUGH THE AUTHOR AND LONELY PLANET HAVE TAKEN ALL REASONABLE CARE IN PREPARING THIS BOOK, WE MAKE NO WARRANTY ABOUT THE ACCURACY OR COMPLETENESS OF ITS CONTENT AND, TO THE MAXIMUM EXTENT PERMITTED, DISCLAIM ALL LIABILITY FROM ITS USE.

LONELY PLANET OFFICES

AUSTRALIA
THE MALT STORE, LEVEL 3, 551 SWANSTON ST.
CARLTON, VICTORIA 3053
T: 03 8379 8000

IRELAND
UNIT E, DIGITAL COURT, THE DIGITAL HUB,
RAINSFORD ST., DUBLIN 8

USA
124 LINDEN ST., OAKLAND, CA 94607
T: 510 250 6400

UK
240 BLACKFRIARS RD., LONDON SE1 8NW
T: 020 3771 5100

STAY IN TOUCH
LONELYPLANET.COM/CONTACT