

BEHIND THE SCENES

SEND US YOUR FEEDBACK

We love to hear from travelers – your comments help make our books better. We read every word, and we guarantee that your feedback goes straight to the authors. Visit **lonelyplanet.com/contact** to submit your updates and suggestions.

Note: We may edit, reproduce and incorporate your comments in Lonely Planet products such as guidebooks, websites and digital products, so let us know if you don't want your comments reproduced or your name acknowledged. For a copy of our privacy policy visit lonelyplanet.com/privacy.

ACKNOWLEDGMENTS

Climate map data adapted from Peel MC, Finlayson BL & McMahon TA (2007) 'Updated World Map of the Köppen-Geiger Climate Classification', *Hydrology and Earth System Sciences*, 11, 163344.

Cover photographs: Front: Bixby Bridge, Michele Falzone/AWL; Back: Julia Pfeiffer Burns State Park, Michele Falzone/AWL

Illustration pp56-7 by Michael Weldon

THIS BOOK

This 1st edition of *Pacific Coast Highways Road Trips* was researched and written by Andrew Bender, Sara Benson, Alison Bing, Celeste Brash, Nate Cavalieri and Adam Skolnick. This guidebook was produced by the following:

Product Editor Katie O'Connell

Senior Cartographer Alison Lyall

Book Designer Katherine Marsh

Assisting Book Designer Cam Ashley

Cover Researcher Campbell McKenzie

Thanks to Shahara Ahmed, Sasha Baskett, Brendan Dempsey, James Hardy, Darren O'Connell, Martine Power, Wibowo Rusli, Luna Soo, Angela Tinson, Clifton Wilkinson



OUR STORY

A beat-up old car, a few dollars in the pocket and a sense of adventure. In 1972 that's all Tony and Maureen Wheeler needed for the trip of a lifetime – across Europe and Asia overland to Australia. It took several months, and at the end – broke but inspired – they sat at their kitchen table writing and stapling together their first travel guide, *Across Asia on the Cheap*. Within a week they'd sold 1500 copies. Lonely Planet was born.

Today, Lonely Planet has offices in Melbourne, London and Oakland, with more than 600 staff and writers. We share Tony's belief that 'a great guidebook should do three things: inform, educate and amuse'.

INDEX

A

accidents 117
accommodations 13, *see also individual locations*
Los Angeles 11, 93-5
San Diego 111
San Francisco 10, 60-1
air travel 13
airports 13
Alcatraz 56-7, 58, **56-7**, **56-7**
amusement parks, *see*
theme parks
Andrew Molera State Park 39
Arcata 30

B

Balboa Island 48
Balboa Park 106-7
beaches 9, **9**
Baker Beach 55
Huntington Beach 20, 47-8,
104-5, **46**
Laguna Beach 20, 50, 102-3
Muscle Beach 93
Newport Beach 20, 48,
103-4, **49**, **103**
Orange County 43-51, 101-5
Pfeiffer Beach 40
San Diego area 110
Big Sur 37-41, **37**, **38**, **4-5**

000 Map pages

000 Photo pages

Bixby Bridge 39
border crossings 116
breakdowns 117
budgeting 13
business hours 13

C

Cambria 21
car rental 12, 114-16
Cayucos 21
cell phones 12
City Lights Bookstore 54
climate 12, 17, 29, 37, 43
Coit Tower 54, **52-3**
Corona del Mar 48-9
Coronado 18, 109-10
costs 13
Crescent City 34
Crystal Cove State Park
20, 49
cycling 77, 82-3

D

Dana Point 50
Del Norte Coast Redwoods
State Park 34, 73
Disneyland 45, 46, 98-101
accommodations 101
drinking & entertainment
101-2
FASTPASS 100
food 101-2
information 101

itineraries 99
sights & activities 98-101
Disney's California
Adventure 45, 46, 100-1
diving & snorkelling 79-81, 102
driver's licenses 114
driving 114-18
accidents 117
breakdowns 117
car rental 12, 114-16
documents 114
fuel 12, 118
highway conditions 20
insurance 114
maps 116
parking 118
road distances 115
road rules 117-18
safety 116-17
websites 118

E

emergencies 12, 117
Esalen Hot Springs 40
Eureka 26, 69-70

F

Fern Canyon 33
Ferry Building 63, **62**
fishing 75, 110-11
food 13, *see also individual locations*
Fort Bragg 25-6, 68-9

Foxen Canyon Wine Trail 86
fuel 12, 118

G

galleries, see museums & galleries
gardens, see parks & gardens
gas 12, 118
Golden Gate Bridge 8-9, 25, 54, **8**
Golden Gate Park 25-6, 60
Grauman's Chinese Theatre 90, **96**
Grizzly Creek Redwoods State Park 25
Guadalupe 21

H

Hearst Castle 23, **23**
Henry Miller Library 40-1
highlights 8-9, **6-7**
Hollywood 93-5, **92, 96**
Hollywood Bowl 90
Hollywood Sign 90
Hollywood Walk of Fame 90
hot springs 40
Howland Hill Scenic Drive 34
Humboldt Lagoons State Park 32
Huntington Beach 20, 47-8, 104-5, **46**

I

insurance 114
internet access 12

J

Jade Cove 41

000 Map pages
000 Photo pages

Jedediah Smith Redwoods State Park 34
Julia Pfeiffer Burns State Park 41, **41**

K

kayaking
Mendocino 66
San Diego 111
Santa Barbara 83
Santa Cruz 75-7
Knott's Berry Farm 48
Knott's Soak City USA 48

L

La Brea Tar Pits 91
Laguna Beach 20, 50, 102-3
La Jolla 19
Long Beach 20
Los Angeles 11, 90-7, **92, 94, 11, 96**
accommodations 93
drinking & nightlife 97
food 11, 95-7
sights & activities 90-3
tourist information 97
walking tour 94, **94**
Los Angeles International Airport 13
Los Olivos 88-9, 21
Los Padres National Forest 41

M

Malibu 20-1, 91-3, 96
maps 116
McWay Falls 41
Mendocino 25-6, 66-8, **69**
Mexico, travel to/from 116
Mission Beach 19
Mission San Juan Capistrano 103
Mission Santa Barbara 82, **21**

mobile phones 12
money 13
Monterey 24, 77-80, **78, 22**
Morro Bay 21
motorcycles, see driving
museums & galleries
Asian Art Museum 54
Balboa Park 106-7
Exploratorium 55
Getty Villa 93-1
Los Angeles County Museum of Art 91
Musée Mécanique 55
Museum of Contemporary Art 107
Page Museum 91
Seymour Marine Discovery Center 74
music 118

N

national & state parks
Del Norte Coast Redwoods State Park 73
Humboldt Lagoons State Park 72
Jedediah Smith Redwoods State Park 73
Patrick's Point State Park 71-2
Pfeiffer Big Sur State Park 39-40
Redwood National Park 26, 33-4, 72-3, **33**
Newport Beach 20, 48, 103-4, **49, 103**
Newton B Drury Scenic Parkway 34
O
opening hours 13
Orange County 43-51, 98-105, **43, 44**

P

Pacific Marine Mammal Center 50
 Palos Verdes Peninsula 20
 parking 10, 11, 118
 parks & gardens
 Crissy Field 55
 Golden Gate Park 60
 Griffith Park 90
 Patrick's Point State Park 31-2
 petrol 12, 118
 Pfeiffer Big Sur State Park 39-40
 photography 17, 29, 37, 43
 Pismo Beach 21-3
 Point Arena 25
 Point Reyes National Seashore 24
 Point Sur State Historic Park 39

R

redwoods 9, 26, 28-35, 66-73, **29, 31, 9, 33, 35, 72**
 Redwood National Park 26, 33-4, 72-3, **33**
 rental cars 12
 road distances 115
 road rules 116, 117-18

S

safety 116-17
 Salmon Creek Falls 41
 Samoa Dunes Recreation Area 30
 Samoa Peninsula 30
 San Clemente 19-20
 San Diego 18-19, 106-13, **108-9, 110, 113**
 accommodations 111
 entertainment 112
 food 111-12
 itineraries 107

 sights & activities 106-11
 tourist information 112
 San Diego Zoo 106-7
 San Francisco 10, 24-5, 54-65, **58, 64, 10, 53**
 accommodations 60-1
 drinking & nightlife 63-5
 entertainment 65
 festivals & events 59
 food 10, 61-3
 neighbourhoods 55
 sights 54-5
 tours 58-9
 transportation 65
 walking tours 64
 San Francisco International Airport 13
 San Luis Obispo 80-1
 Santa Barbara 21, 82-9, **84, 21**
 accommodations 83
 drinking & nightlife 85-6
 entertainment 86-9
 food 83-5
 sights & activities 82-3
 Santa Barbara Wine Country 86-9, **88**
 Santa Cruz 24, 74-7, **75**
 Santa Monica 22, 93, 95, 96-7, **22**
 Santa Rita Hills Wine Trail 87-8
 Santa Ynez Valley 87-9
 Seal Beach 45-7
 Sea Ranch 25
 Solvang 89
 Sonoma Coast 25
 South Bay 20
 state parks, *see* national & state parks
 Steinback, John 77
 Sunset Beach 47
 Sunset Boulevard 91
 Sunset Strip 91
 surfing

Huntington Beach 105
 Newport Beach 104-5
 Monterey 79-81
 Santa Barbara 83
 Santa Cruz 74

T

telephone services 12
 theme parks
 Balboa Fun Zone 103-4
 Disneyland 45, 46, 98-101
 Disney's California Adventure 45, 46, 100-1
 Knott's Berry Farm 48
 Knott's Soak City USA 48
 SeaWorld San Diego 110
 tipping 13
 transportation 10, 11, 13, 114-18
 travel seasons 12
 trees 32, *see also* redwoods
 Trinidad 70-1, 30

V

Venice 95
 Ventura 21

W

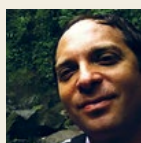
walking tours
 Los Angeles 94, **94**
 San Francisco 64, **64**
 weather 12, 17, 29, 37, 43
 websites 10, 11, 13
 whale-watching
 Monterey 77
 San Diego 111
 Santa Barbara 83
 Santa Cruz 75
 Trinidad 71
 wi-fi 12
 wildlife sanctuaries 77
 wineries 86-8



NATE CAVALIERI

Born and raised in rural Michigan, Nate Cavalieri has a sentimental soft spot for the piquant cow pastures, political radicals and sleepy one-

stoplight towns of Northern California. He authors guides for Lonely Planet on the US, Central America and the Caribbean, writes about music and maintains several fictional twitter accounts about professional cycling. He lives in Oakland. Look him up at www.natecavalieri.com.



ADAM SKOLNICK

Adam Skolnick has written about travel, culture, health, sports, human rights and the environment for Lonely Planet, *New York Times*, *Outside*, *Men's*

Health, Travel & Leisure, *Salon.com*, *BBC.com* and *ESPN.com*. He has authored or co-authored 25 Lonely Planet guidebooks. Find him on Twitter and Instagram (@adamskolnick).

OUR WRITERS



ANDREW BENDER

Andy is a true Angeleno, not because he was born in Los Angeles but because he's made it his own. This native New Englander drove cross-country to

work in film production, and eventually realized that the joy was in the journey (and writing about it). He writes the Seat 1A travel site for Forbes, and his writing has also appeared in the *Los Angeles Times*, in-flight magazines and over three dozen LP titles. Current obsessions: discovering SoCal's next great ethnic enclave, and photographing winter sunsets over the Pacific.



SARA BENSON

After graduating from college, Sara jumped on a plane to California with just one suitcase and \$100 in her pocket. She has bounced around the Golden

State ever since, including in the Sierra Nevada, where she worked as a seasonal park ranger. The author of over 50 travel and nonfiction books, Sara also coordinated Lonely Planet's *California* guide. Follow her adventures online at www.indietraveler.blogspot.com, www.indietraveler.net and @indie_traveler on Twitter.

Read more about Sara at:

www.lonelyplanet.com/members/Sara_Benson



ALISON BING

Over 10 guidebooks and 20 years in San Francisco, author Alison Bing has spent more time on Alcatraz than some inmates, become an aficionado

of drag and burritos, and willfully ignored Muni signs warning that "safety requires avoiding unnecessary conversation."



CELESTE BRASH

Celeste's ancestors moved to Northern California in 1906 and this is the region she will always consider home. After 15 years in French Polynesia she now lives in the Pacific Northwest

and was thrilled to head south to explore and imbibe the treasures of her old stomping grounds, hike snowy peaks, find petroglyphs in caves, be awed by redwoods and seduced by the wild coast. Find out more about Celeste at www.celestebrash.com.



MORE WRITERS

Published by Lonely Planet Publications Pty Ltd

ABN 36 005 607 983

1st edition – May 2015

ISBN 978 1 74360 704 6

© Lonely Planet 2015 Photographs © as indicated 2015

10 9 8 7 6 5 4 3 2 1

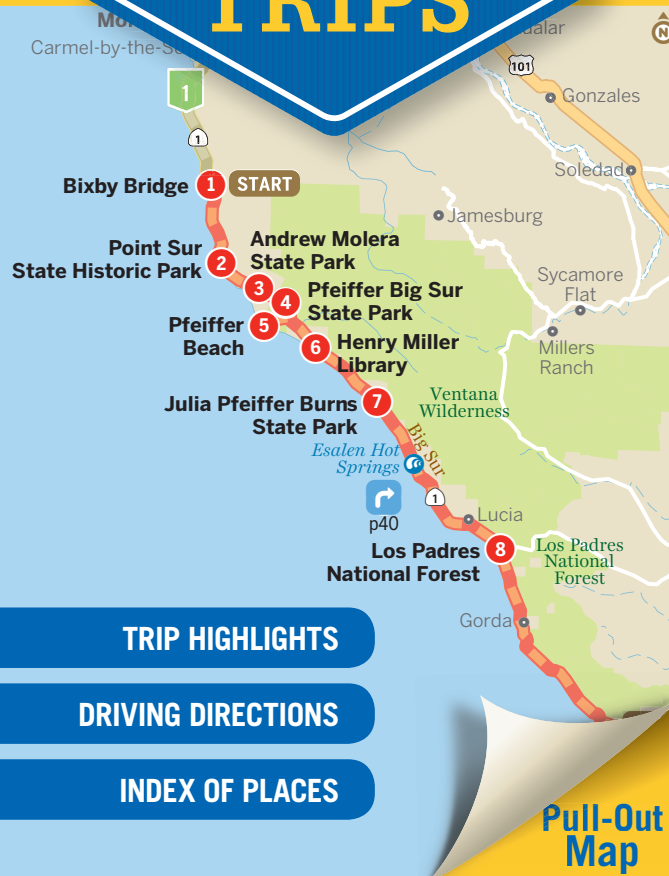
Printed in China

All rights reserved. No part of this publication may be copied, stored in a retrieval system, or transmitted in any form by any means, electronic, mechanical, recording or otherwise, except brief extracts for the purpose of review, and no part of this publication may be sold or hired, without the written permission of the publisher. Lonely Planet and the Lonely Planet logo are trademarks of Lonely Planet and are registered in the US Patent and Trademark Office and in other countries. Lonely Planet does not allow its name or logo to be appropriated by commercial establishments, such as retailers, restaurants or hotels. Please let us know of any misuses: lonelyplanet.com/ip.

Although the authors and Lonely Planet have taken all reasonable care in preparing this book, we make no warranty about the accuracy or completeness of its content and, to the maximum extent permitted, disclaim all liability arising from its use.

PACIFIC COAST HIGHWAYS

ROAD TRIPS



TRIP HIGHLIGHTS

DRIVING DIRECTIONS

INDEX OF PLACES

Pull-Out Map

GEOGRAPHIC FEATURES

Big Sur C7
Black Rock Desert E3
Catalina Island E10
Channel Islands D10
Mojave Desert G9
Mt Shasta C3
Mt Whitney F7
Point Arena A5
Samoa Peninsula A3
San Clemente Island F11
San Nicolas Island E10
Sierra Nevada D5
Telescope Peak G8
White Mountain F6

PARKS

Anza-Borrego Desert State Park G10
Cleveland National Forest G11
Crater Lake National Park C1
Death Valley National Park G7
Del Norte Coast Redwoods State Park A2
Humboldt Redwoods State Park A4
Inyo National Forest E5
Jedediah Smith Redwoods State Park A2
Joshua Tree National Park H10
Kings Canyon National Park E7
Klamath National Forest C2
Lake Mead National Recreation Area J8
Lassen National Forest C3
Lassen Volcanic National Park C4
Los Padres National Forest C8
Mendocino National Forest B4
Modoc National Forest D2
Mojave National Preserve H9
Patrick's Point State Park A3
Pfeiffer Big Sur State

Park B8
Pinnacles National Monument C7
Point Reyes National Seashore B6
Point Sur State Historic Park B7
Redwood National Park A3
Sequoia National Park E7
Shasta-Trinity National Forest B4
Six Rivers National Forest A3
Trinity Alps Wilderness B3
Ventana Wilderness C8
Yosemite National Park D6

PLACES OF INTEREST

Disneyland Resort F10

TOWNS/CITIES

A
Anaheim F10
Arcata A3

B

Baker H8
Bakersfield E8
Bandon A1
Barstow G9
Berkeley B6
Bishop F6
Blythe J10
Brookings A2
Buellton D9

C

Carson City D5
Crescent City A2

E

Elko H3
Ely H5
Eureka A3

F

Fort Bragg A4
Fresno D7
Furnace Creek G7

H

Huntington Beach F10

K

Klamath Falls C2

L

La Jolla G11
Laguna Beach F10
Las Vegas H7
Leggett A4
Lompoc D9
Long Beach F10
Los Angeles F10
Los Olivos D9

M

Malibu E10
Mammoth Lakes E6
Medford B2
Mendocino A5
Mesquite J7
Mexicali H11
Mojave F9
Monterey C7
Morro Bay D8

N

Napa B6
Needles J9
Nevada City D5

O

Oakland C6
Oceanside G10

P

Palm Springs G10
Palo Alto C6
Panamint Springs F7
Pasadena F9
Pismo Beach D9
Placerville D5

R

Red Bluff C4
Redwood B2
Reno D4
Roseburg B1

S

Sacramento C5
San Bernardino G9
San Clemente F10
San Diego G11

San Francisco B6
San Jose C6
San Luis Obispo D8
San Rafael B6
Santa Barbara E9
Santa Cruz C7
Santa Monica F10
Santa Rosa B5
Solvang D9
Sonoma B6
Sonoma D6
South Lake Tahoe D5
Stockton C6
Summer Lake D1
Sutter Creek D5

T

Tecopa G8
Tijuana G11
Tonopah G6
Trinidad A3
Truckee D5
Twin Falls H1

W

Weed B3
Winnemucca F3

Y

Yuma J11

WATER FEATURES

Clear Lake B5
Goose Lake D2
Gulf of California J12
Honey Lake D4
Kern River E8
Kings River D7
Klamath River B2
Lake Mead J7
Lake Tahoe D5
Mono Lake E6
Pacific Ocean C10
Pit River C3
Pyramid Lake D4
Sacramento River C4
Salton Sea H10
San Joaquin River C6
Shasta Lake B3

TRIP HIGHLIGHTS



Northern Redwood Coast

Hug a 700-year-old tree, stroll moody coastal bluffs and drop in on roadside attractions of yesteryear on this trip through verdant redwood parks and personality-packed villages.

5 DAYS
160 MILES/257KM

GREAT FOR...



BEST TIME TO GO

April to November for clear skies the region's warmest weather.

ESSENTIAL PHOTO
Misty redwoods clinging to rocky Pacific cliffs at Del Norte Coast Redwoods State Park.

BEST SCENIC DRIVE
The Howland Hill Scenic Drive through dense old-growth forests.

1 Samoa Peninsula » 2 Trinidad

The Drive » Head north on Hwy 101 passing myriad views of Humboldt Bay. Pass Arcata and take the exit to Trinidad. Note that the corridor between Eureka and Arcata is a closely watched safety corridor (aka speed trap), so keep it slow.

2 Trinidad » 3 Patrick's Point State Park

The Drive » Head back north on Patrick's Point drive to hug the shore for 6 miles.

3 Patrick's Point State Park » 4 Humboldt Lagoons State Park

The Drive » Make your way back out to Hwy 101 through thick stands of redwoods. North another 5 minutes will bring you to the sudden clearing of Big Lagoon, part of Humboldt Lagoons State Park. Continue just a minute for the visitors center.

4 Humboldt Lagoons State Park » 5 Redwood National Park

The Drive » Now, at last, you'll start to lose all perspective among



GIANT REDWOOD

the world's tallest trees. This is likely the most scenic part of the entire trip; you'll emerge from curvy two-lane roads through redwood groves to stunning mist-shrouded shores dotted with rocky islets.

5 Redwood National Park » 6 Del Norte Coast Redwoods State Park

The Drive » Follow the winding road through beautiful inland forests with views of the east and its layers of ridges and valleys, until you reach Klamath with its bear bridge. Del Norte Coast Redwoods State Park is just a few minutes up the road.

6 Del Norte Coast Redwoods State Park » 7 Jebediah Smith Redwoods State Park

The Drive » Leaving Del Norte Coast Redwoods State Park you'll enter dreary little Crescent City, a fine enough place to gas up or grab a bite, but not worth stopping long. North of town, Hwy 199 splits off. Take it to South Fork Rd; turn right after crossing two bridges.



TRIP HIGHLIGHTS



Disneyland & Orange County Beaches

Let the kids loose at the 'Happiest Place on Earth,' then strike out for sunny SoCal beaches – as seen on TV and the silver screen. It's impossible not to have fun on this coastal getaway.

2-4 DAYS
60 MILES/95KM

GREAT FOR...



BEST TIME TO GO

April to November to avoid winter rains.

ESSENTIAL PHOTO
Surfers at Huntington Beach Pier.

BEST FOR VIEWS
Corona del Mar's Lookout Point.

1 Disneyland » 2 Seal Beach

The Drive » Follow Harbor Blvd south for 3 not-very-scenic miles, then take Hwy 22 west through inland Orange County, merging onto the I-405 north. After another mile or so, exit onto Seal Beach Blvd, which crawls 3 miles toward the coast. Turn right onto Hwy 1, also known as the Pacific Coast Hwy (PCH) throughout Orange County, then take a left onto Main St in Seal Beach.

2 Seal Beach » 3 Huntington Beach

The Drive » Past a short bridge farther south along Hwy 1, drivers drop onto a mile-long spit of land known as Sunset Beach, with its biker bars and harborside kayak and stand-up paddle boarding (SUP) rental shops. Keep cruising Hwy 1 south another 6 miles past Bolsa Chica State Beach and Ecological Reserve to Huntington Beach Pier.

3 Huntington Beach » 4 Newport Beach

The Drive » From the Huntington Beach Pier at the intersection of Main St, drive south on Hwy 1 (PCH) alongside the ocean for another 4 miles to Newport Beach. Turn right onto W Balboa Blvd, leading onto the Balboa Peninsula, squeezed between the ocean and Balboa Island, off Newport Harbor.



LAGUNA BEACH

4 Newport Beach » 5 Corona del Mar

The Drive » South of Newport Beach, prime-time ocean views are just a short detour off Hwy 1. First drive south across the bridge over Newport Channel, then after 3 miles turn right onto Marguerite Ave in Corona del Mar. Once you reach the coast, take another right onto Ocean Blvd.

5 Corona del Mar » 6 Crystal Cove State Park

The Drive » Follow Orchid Ave back north to Hwy 1, then turn right and drive southbound. Traffic thins out as ocean views become more wild and uncluttered by housing developments that head up into the hills on your left. It's just a couple of miles to the entrance of Crystal Cove State Park.

6 Crystal Cove State Park » 7 Laguna Beach

The Drive » Drive south on Hwy 1 for another 4 miles or so. As shops, restaurants, art galleries, motels and hotels start to crowd the highway once again, you've arrived in Laguna Beach. Downtown is a maze of one-way streets just east of the Laguna Canyon Rd (Hwy 133) intersection.

7 Laguna Beach » 8 Dana Point

The Drive » Keep driving south of downtown Laguna Beach on Hwy 1 (PCH) for about 3 miles to Aliso Beach County Park, then another 4 miles into the town of Dana Point. Turn right onto Green Lantern St, then left onto Cove Rd, which winds past the state beach and Ocean Institute onto Dana Point Harbor Dr.



History & Culture



Food & Drink



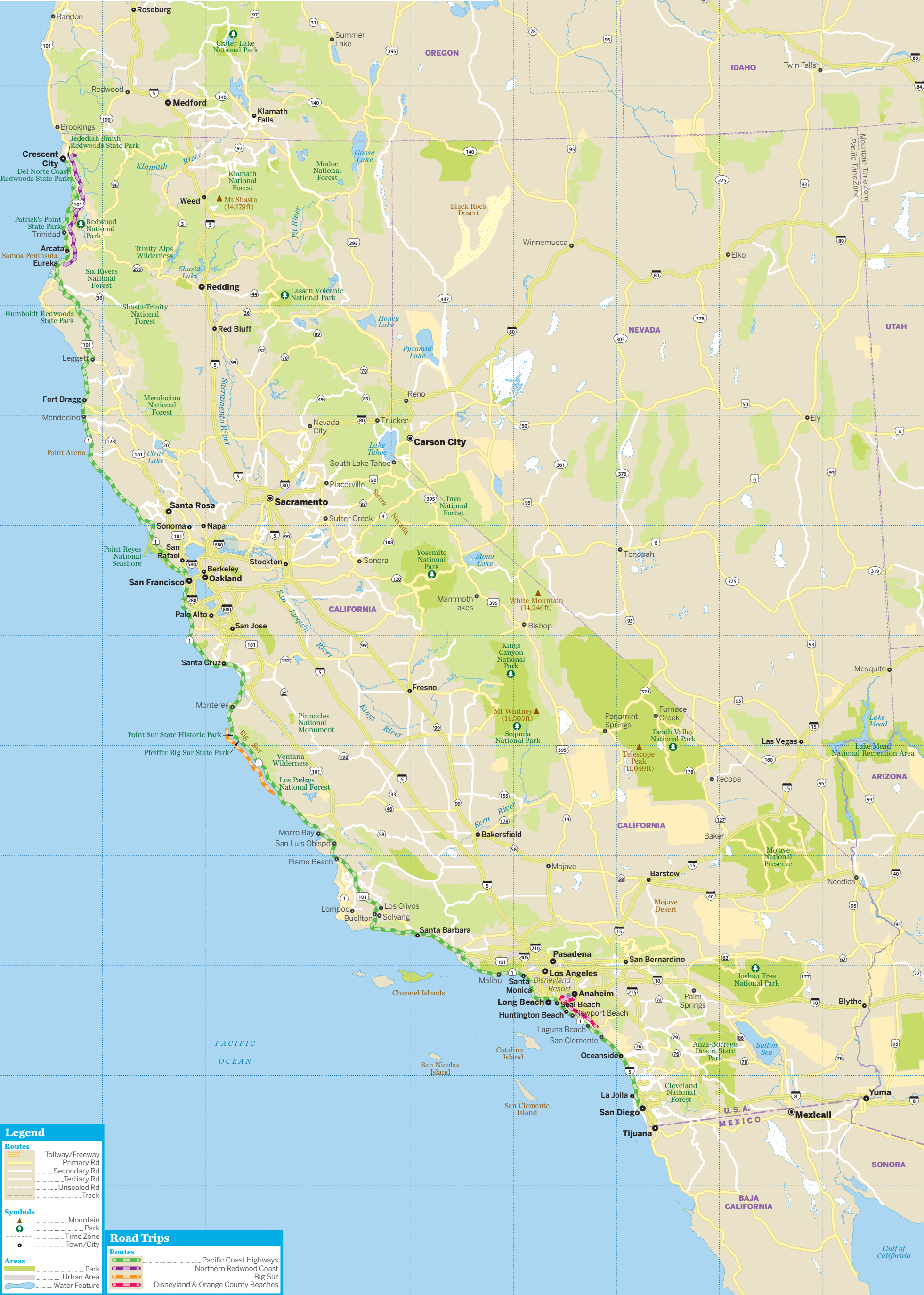
Outdoors



Family

lonelyplanet.com

Pacific Coast Highways



Legend

Routes

- Tollway/Freeway
- Primary Rd
- Secondary Rd
- Tertiary Rd
- Unsealed Rd
- Track

Symbols

- Mountain
- Park
- Time Zone
- Town/City

Areas

- Park
- Urban Area
- Water Feature

Road Trips

Routes

- Pacific Coast Highways
- Northern Redwood Coast
- Big Sur
- Disneyland & Orange County Beaches

© Lonely Planet Publications Pty Ltd. To make it easier for you to use, access to this chapter is not digitally restricted. In return, we think it's fair to ask you to use it for personal, non-commercial purposes only. In other words, please don't upload this chapter to a peer-to-peer site, mass email it to everyone you know, or resell it. See the terms and conditions on our site for a longer way of saying the above - 'Do the right thing with our content.'