

BEHIND THE SCENES

SEND US YOUR FEEDBACK

We love to hear from travelers – your comments help make our books better. We read every word, and we guarantee that your feedback goes straight to the authors. Visit **lonelyplanet.com/contact** to submit your updates and suggestions.

Note: We may edit, reproduce and incorporate your comments in Lonely Planet products such as guidebooks, websites and digital products, so let us know if you don't want your comments reproduced or your name acknowledged. For a copy of our privacy policy visit lonelyplanet.com/privacy.

ACKNOWLEDGMENTS

Climate map data adapted from Peel MC, Finlayson BL & McMahon TA (2007) 'Updated World Map of the Köppen-Geiger Climate Classification', *Hydrology and Earth System Sciences*, 11, 163344.

Cover photographs: Front: Autumn countryside in the Green Mountains, Ron Thomas/Getty; Back: Lake Champlain barn, Vermont, George Robinson/Alamy

THIS BOOK

This 1st edition of *New England Fall Foliage Road Trips* was researched and written by Amy C Balfour, Gregor Clark, Ned Friary, Paula Hardy, Caroline Sieg and Mara Vorhees. This guidebook was produced by the following:

Destination Editor Rebecca Warren

Product Editor Kate Chapman

Senior Cartographer Alison Lyall

Book Designer Wibowo Rusli

Cartographers Mick Garrett, Julie Sheridan, Diana von Holdt

Assisting Editors Imogen Bannister, Catherine Naghten

Cover Researcher Naomi Parker

Thanks to Shahara Ahmed, Anita Banh, Brendan Dempsey, James Hardy, Katherine Marsh, Darren O'Connell, Katie O'Connell, Kirsten Rawlings, Angela Tinson



OUR STORY

A beat-up old car, a few dollars in the pocket and a sense of adventure. In 1972 that's all Tony and Maureen Wheeler needed for the trip of a lifetime – across Europe and Asia overland to Australia. It took several months, and at the end – broke but inspired – they sat at their kitchen table writing and stapling together their first travel guide, *Across Asia on the Cheap*. Within a week they'd sold 1500 copies. Lonely Planet was born.

Today, Lonely Planet has offices in Melbourne, London and Oakland, with more than 600 staff and writers. We share Tony's belief that 'a great guidebook should do three things: inform, educate and amuse'.

INDEX

A

accommodations 13, *see also individual locations*
 activities, *see individual activities*
 airports 13
 Amherst 41, 73
 Appalachian Trail 9, 20, 47, 48
 art galleries, *see also museums*
 Brattleboro Museum & Art Center 105
 Clark Art Institute 75
 Firehouse Center for the Visual Arts 112
 Harvard Art Museums 65
 Hood Museum of Art 88
 Isabella Stewart Gardner Museum 64
 MASS MoCA 77
 Museum of Fine Arts 64
 Portland Museum of Art 115
 Shelburne Museum 95
 Smith College Museum of Art 71
 Wadsworth Atheneum 55
 Williams College Museum of Art 75

B

beaches 79, 83-4, 103, 113
 Beartown State Forest 22
 beer, *see breweries*
 Bennington 106

000 Map pages

Berkshires, the 22, 74-7
 Bethel 46-7, 118
 Bethlehem 57-8, 84
 bicycling 49, 65, 95, 100
 bird-watching 47, 101
 boat trips 72, 96, 115-16
 Boston 10-11, 60-70, **62-3**
 accommodations 65-7
 drinking & nightlife 68-9
 entertainment 69
 food 67-8
 itineraries 65
 shopping 69-70
 sights 60-5
 tours 65
 walking tours 66, **66**
 Brattleboro 104-5, **105**
 Bretton Woods 24, 86-7
 breweries

 Connecticut 56
 Massachusetts 72, 77
 New Hampshire 82
 Portland 116
 Vermont 29-30, 95, 98, 101, 103, 105
 bridges 32, 36, 107
 Bridgewater Corners 29-30
 Burdick Chocolate 40
 Burlington 95-8, 112-13, **96, 113**
 business hours 13

C

cable cars 83, 102
 Cambridge 30
 canoeing, *see kayaking*

car rental 120-1
 cars, *see driving*
 cell phones 12
 Champlain Orchards 30
 Charlemont 73
 Charlestown 40
 cheese 30, 86, 87, 93, 103, 108
 chocolate 40, 87
 cider 30, 87
 cinemas 57, 86
 climate 12
 Connecticut 54-9
 Cornish Windsor Bridge 40
 Cornwall Bridge 22
 costs 13
 Crawford Notch 86-7
 cycling, *see bicycling*

D

Dartmouth College 87
 Deerfield 41, 72
 Dickinson, Emily 41
 Dorset 108
 Dr Seuss National Memorial Sculpture Garden 42
 driver's licenses 120
 driving 120-3
 car rental 120-1
 documents 120
 gas 122
 insurance 120
 maps 121
 parking 122
 road distances 121
 road rules 121, 122

driving continued
safety 122, 123
websites 121

E

East Thetford 32
Echo Lake State Park 79
emergencies 12
events, *see* festivals

F

Fall Foliage Parade 22
farmers markets 97, 118
farms
Connecticut 57
New Hampshire 87, 89
Vermont 9, 30, 32, 97,
102, 103
ferries 123
festivals 22, 30, 32, 102
Fitzwilliam 89
foliage 9, 22, 54, 85, 92, 116
food 13, 103, *see also*
individual foods
Fort at No 4 40
Franconia 84-6
Franconia Notch State
Park 83-4
Freedom Trail 66, **66**
Frost, Robert 23, 84, 102,
103, 106
fuel 12, 22

G

galleries, *see* art galleries,
museums
gas 12, 122
Goshen 22
Grafton 108-9
Grafton Notch Scenic
Byway 47
Grafton Notch State Park 47
Great Barrington 22, 77

H

Hancock 89
Hanover 87-9, **88**
Harrisville 89
Hartford 55-6, **56**
Harvard University 64
Height of Land 48
hiking
Connecticut 22
Maine 47, 49, 118
Vermont 28, 92, 100
New Hampshire 79, 81, 82,
83-4, 87, 89
Hildene 23, 107
Hillsborough Center 89
Historic Deerfield Village 72
hot-air ballooning 18-19, 29
Housatonic Meadows State
Park 21-2

I

insurance 120
internet access 12

K

Kancamagus Hwy 24, 81-2
kayaking 41, 74, 115, 118
Kent 19-21, 58
Killington 102
Kitson, Henry Hudson 77

L

Lake Candlewood 18-19, 57
Lake Champlain 23, 99
Lake Waramaug 57
Lakeville 59
leaf-peeping, *see* foliage
Lee 74-5
Lenox 75
libraries 61, 87
Lincoln 82-3
Litchfield 57
Litchfield Hills 57-9
Littleton 36-7, 85-6

M

Macedonia Brook State
Park 19
Maine 114-19
Manchester 23, 107-9
maps 121
markets 69, 93, 97, 112, 118
Marsh-Billings-Rockefeller
National Historical Park 29
Massachusetts 60
Middlebury 102-4
mobile phones 12
Monadnock State Park 89
money 13
Montague 40-1
Montpelier 32, 92
Montshire Museum of
Science 37-9
moose spotting 48, 50, 82
Mooslookmeguntic Lake 48
motorcycles, *see* driving
Mt Equinox 23
Mt Greylock State Forest
22-3, 60
Mt Holyoke College 42
Mt Snow 109
Mt Washington 87
Mt Washington Valley
79-81, **80**
museums, *see also* art
galleries
American Museum of
Fly Fishing & Orvis 107
Bennington Museum 106
Boston Tea Party Ships &
Museum 61
Emily Dickinson Museum
41
Fairbanks Museum &
Planetarium 99
Harriet Beecher Stowe
House 55
Mark Twain House &
Museum 55
Middlebury College
Museum of Art 103

Montshire Museum of Science 37-9
 Mount Washington Observatory Weather Discovery Center 79
 Naismith Memorial Basketball Hall of Fame 70
 Shaker Museum 119
 Sloane-Stanley Museum 58
 St Johnsbury Athenaeum 99
 Sugar Hill Sampler 84
 music 122, 123

N

Naismith Memorial Basketball Hall of Fame 42
 New Hampshire 78-89, **91**
 Newfane 108
 North Adams 76-7
 North Conway 24, 79
 North Woodstock 82-3
 Northampton 42, 70-2
 Northeast Kingdom 99-101
 Norwich 37-9

O

October Mountain State Forest 22, 74
 opening hours 13

P

parking 122
 parks & gardens
 Boston Common 60-1
 Dr Seuss National Memorial Sculpture Garden 70
 Intervale Center 97
 Marsh-Billings-Rockefeller National Historical Park 101
 Mt Greylock State Reservation 77
 Public Garden (Boston) 61
 Rose Kennedy Greenway 69
 Pequawket Trail Scenic Byway 47

petrol 12, 122
 Portland 114-18

Q

Quechee 28-9, 101-2
 Quiet Path 110

R

radio 123
 rafting 41
 Rangeley 48-9, 119
 Rangeley Lakes National Scenic Byway 47
 Revere, Paul 64
 road distances 121
 road rules 121, 122
 rock climbing 79
 Rumford 47

S

Sabbathday Lake 119
 safety 122, 123
 sailing 72, 96, 115-16
 Saint-Gaudens National Historic Site 39-40
 scenic drives
 Connecticut 21
 Maine 47
 Massachusetts 41
 New Hampshire 24, 81-2, 89
 Vermont 98, 107
 scenic railways 24, 79, 87
 Screw Auger Falls 47
 Shelburne 30
 Shelburne Falls 72-3
 Silvio Conte National Fish & Wildlife Refuge 39
 Smith College 42
 South Hadley 42
 Springfield 42, 70
 Squantz Pond State Park 18
 State Route 27 Scenic Byway 47
 Stockbridge 77
 Stowe 92-5, 110-13, **94, 111**

Stowe Walkway 110
 Sugar Hill 84
 Sugarloaf 50
 Sunday River 47
 swimming 79, 82, 83-4, 93, 103, 104

T

telephone services 12
 theater 69, 108
 tipping 13
 transportation 13, 120-4
 Twain, Mark 55
 Tyringham 77

U

universities 42, 64, 73

V

Vermont 90-113, **91**
 vineyards, *see* wineries

W

walking, *see* hiking
 walking tours 66, 110-13, **66, 111, 113**
 Walpole 40, 89
 waterfalls 22, 42, 47, 48, 58, 82
 weather 12
 websites 13, 121
 West Cornwall 59
 White Mountains 78-87, **80**
 White Silo Farm Winery 18
 wi-fi 12
 Williamstown 75-6
 Wilmington 109
 wineries
 Connecticut 18, 57
 New Hampshire 87
 Vermont 23, 28-9, 30
 Woodstock 29, 101-2

Z

zip-lining 24, 47, 50

OUR WRITERS



AMY C BALFOUR

Amy has hiked, biked and paddled her way across the US. Raised in the South, she's been visiting the Outer Banks since childhood and has backpacked

along the Appalachian Trail in the Great Smokies. In New Hampshire she explored the White Mountains and tackled Mt Monadnock for the first time. She has authored 26 guidebooks for Lonely Planet and has written for *Backpacker*, *Redbook*, *Southern Living* and the *Washington Post*.



GREGOR CLARK

Gregor fell in love with Vermont at age 16, while working as a summer conservation volunteer in the state's southwestern corner. His long-held dreams of

moving to the Green Mountain State came to fruition in 1997, and he's been here ever since. A lifelong polyglot with a degree in Romance languages, Gregor has written regularly for Lonely Planet since 2000, with a focus on Europe and Latin America. He lives with his wife and two daughters in Middlebury, Vermont.



NED FRIARY

Ned's college days were spent in Amherst, and traveling around his old stomping grounds always feels like a homecoming of sorts.

He now lives on Cape Cod and

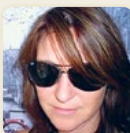
has explored the region from one end to the other, searching out the best lobster roll, canoeing the marshes, and hiking and cycling the trails.



PAULA HARDY

The British half of an American-British couple, Paula spends a lot of time hopping across the pond, torn between the bright lights of London town

and Boston, where weekend in the New England countryside is a near-weekly activity. Research has taken her way off the beaten path into Connecticut's dairy barns, lobster shacks (yum!) and wine-tasting rooms, and Rhode Island's tiny East Bay villages and breezy Block Island cycling trails – the lasting memories of Baggio defeats and Mudslide sundowners won't be easily forgotten.



CAROLINE SIEGEL

Caroline's relationship with New England began when she briefly lived in Boston. Subsequent trips to the region yielded countless hikes in the Green

Mountains, excessive beer and cheese tasting in Vermont, and a profound obsession with blueberry pie and apple-cider doughnuts. She also believes that one of the best ways to embrace the area is to explore its ubiquitous lakes and waterways by boat. These days, she visits New England as often as she can.



MARA VORHEES

Born and raised in St Clair Shores, Michigan, Mara traveled the world (if not the universe) before finally settling in the Hub. She spent several years pushing

papers and tapping keys at Harvard University, but she has since embraced the life of a full-time travel writer, covering destinations as diverse as Russia and Belize. She lives in a pink house in Somerville, Massachusetts, with her husband, two kiddies and two kitties. She is often seen eating doughnuts in Union Sq and pedaling her bike along the Charles River. The pen-wielding traveler is the author of Lonely Planet's *Boston* guide, among other titles. Follow her adventures online at www.havetwinswilltravel.com.

Published by Lonely Planet Publications Pty Ltd

ABN 36 005 607 983

1st edition – May 2016

ISBN 978 1 76034 0483

© Lonely Planet 2016 Photographs © as indicated 2016

10 9 8 7 6 5 4 3 2 1

Printed in China

All rights reserved. No part of this publication may be copied, stored in a retrieval system, or transmitted in any form by any means, electronic, mechanical, recording or otherwise, except brief extracts for the purpose of review, and no part of this publication may be sold or hired, without the written permission of the publisher. Lonely Planet and the Lonely Planet logo are trademarks of Lonely Planet and are registered in the US Patent and Trademark Office and in other countries. Lonely Planet does not allow its name or logo to be appropriated by commercial establishments, such as retailers, restaurants or hotels. Please let us know of any misuses: lonelyplanet.com/ip.

Although the authors and Lonely Planet have taken all reasonable care in preparing this book, we make no warranty about the accuracy or completeness of its content and, to the maximum extent permitted, disclaim all liability arising from its use.

© Lonely Planet Publications Pty Ltd. To make it easier for you to use, access to this chapter is not digitally restricted. In return, we think it's fair to ask you to use it for personal, non-commercial purposes only. In other words, please don't upload this chapter to a peer-to-peer site, mass email it to everyone you know, or resell it. See the terms and conditions on our site for a longer way of saying the above - 'Do the right thing with our content.'