

Contents

On the Road	4	Entertainment	108
Guatemala Highlights	5	Shopping	109
Destination Guatemala	11	Getting There & Around	109
Getting Started	12	AROUND ANTIGUA	110
Itineraries	16	Jocotenango	110
History	21	El Hato	111
The Culture	36	Ciudad Vieja & Around	111
Food & Drink	49	San Juan Comalapa	112
Environment	56	Santiago Sacatepéquez & Sumpango	112
Guatemala City	63	The Highlands	114
History	64	Climate	115
Orientation	64	Getting Around	115
Information	64	LAGO DE ATITLÁN	116
Dangers & Annoyances	65	Iximché	117
Sights	69	Sololá	118
Guatemala City for Children	73	Panajachel	118
Tours	73	Around Panajachel	128
Sleeping	74	Santiago Atitlán	130
Eating	76	San Pedro La Laguna	133
Drinking	79	San Juan La Laguna	138
Entertainment	80	San Marcos La Laguna	139
Shopping	81	Jaibalito	141
Getting There & Away	81	Santa Cruz La Laguna	141
Getting Around	84	QUICHÉ	143
Antigua	86	Chichicastenango	143
History	87	Santa Cruz del Quiché	149
Orientation	87	Sacapulas	151
Information	87	Uspantán	152
Dangers & Annoyances	92	Nebaj	153
Sights	92	Around Nebaj	156
Activities	96	WESTERN HIGHLANDS	157
Walking Tour	97	Cuatro Caminos	157
Courses	98	Quetzaltenango	157
Tours	99	Around Quetzaltenango	169
Festivals & Events	100	Huehuetenango	175
Sleeping	100	Around Huehuetenango	179
Eating	104	La Mesilla	185
Drinking	107	The Pacific Slope	186
		Ciudad Tecún Umán	187
		El Carmen	187
		Tilapita	187
		Coatepeque	189
		Retalhuleu	190
		Around Retalhuleu	192
		Champerico	193
		Mazatenango	194
		Tulate	194
		Chiquistepeque	195

Santa Lucía Cotzumalguapa	195	Flores & Santa Elena	272
La Democracia	198	Around Flores	282
Sipacate	198	El Remate	284
Escuintla	199	Macanché	287
Autosafari Chapín	199	Tikal	287
Puerto San José & Balneario Likín	199	Uaxactún	295
Izapa	199	Yaxhá	298
Monterrico	201	Nakum	300
Around Monterrico	204	Melchor de Mencos	300
Cuilapa	205	Mexican Border (Chiapas & Tabasco)	301
Lago de Amatitlán	205	Sayaxché	301
		Around Sayaxché	302
		Remote Maya Sites	305

Central & Eastern Guatemala 207

ALTA & BAJA VERAPAZ	208
Salamá	208
Around Salamá	210
Salto de Chaliscó	211
Biotopo del Quetzal	211
Cobán	213
Around Cobán	220
Parque Ecológico Hun Nal Ye	223
Chisec	223
Around Chisec	223
Parque Nacional Laguna Lachuá	224
Around Laguna Lachuá	224
Playa Grande	224
Raxruhá	225
Around Raxruhá	225
EL ORIENTE	227
Río Hondo	227
Estanzuela	228
Zacapa	228
Chiquimula	228
Around Chiquimula	230
Volcán de Quetzaltepeque	232
Esquipulas	232
Quiriguá	236
COPÁN (HONDURAS)	238
Copán Site	239
Copán Ruinas	245
Around Copán Ruinas	251
CARIBBEAN COAST	252
Lago de Izabal	252
Puerto Barrios	257
Punta de Manabique	260
Livingston	261
Around Livingston	266

El Petén 268

Poptún	270
Around Poptún	271

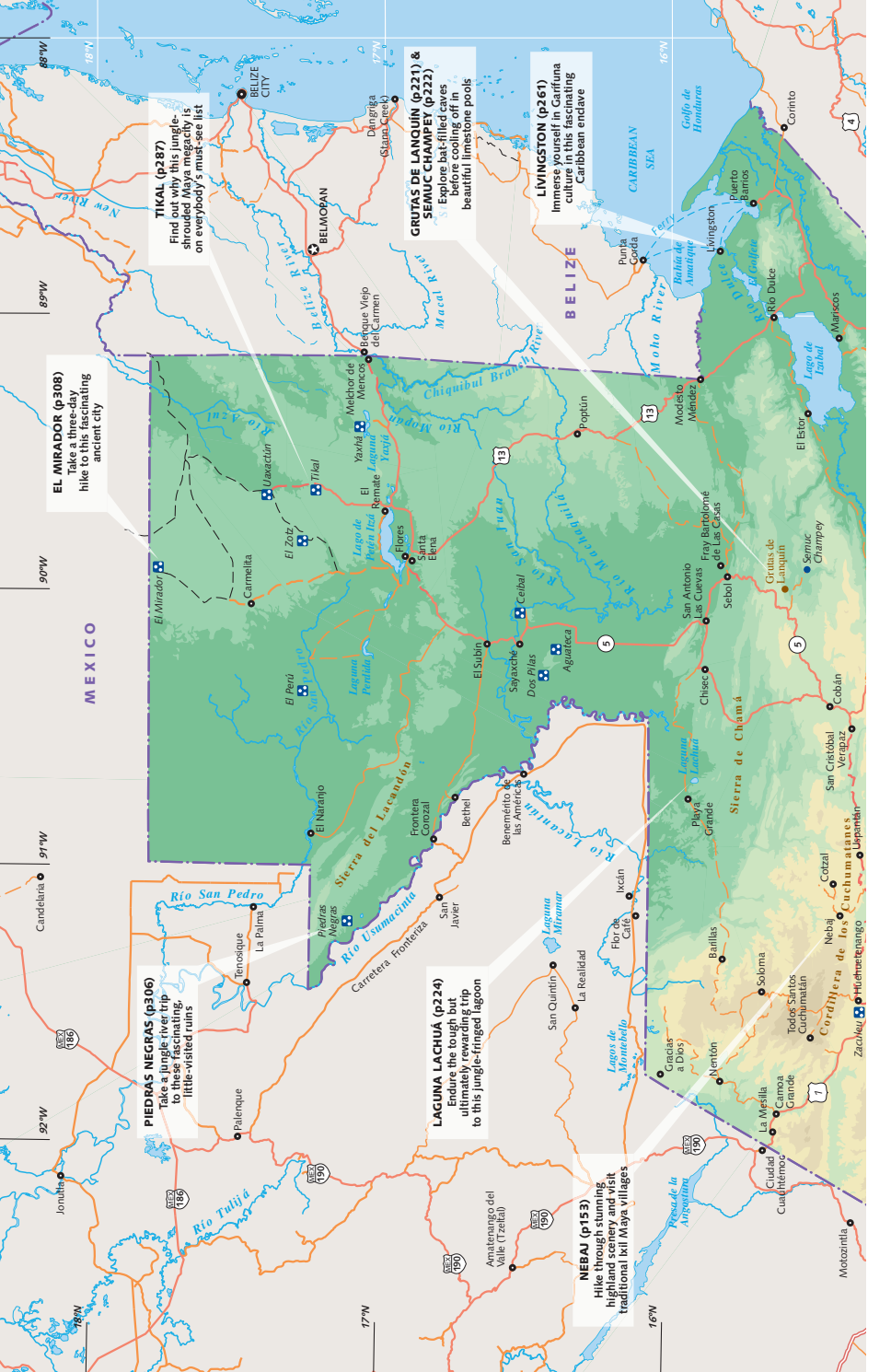
Health	332
Language	339
Glossary	346
The Authors	348
Behind the Scenes	349
Index	351
Map Legend	360

Directory 311

Transportation 325

Regional Map Contents





TIKAL (p287)
Find out why this jungle-shrouded Maya megacity is on everybody's must-see list

GRUTAS DE LANQUÍN (p221) & SEMUC CHAMPEY (p222)
Explore bat-filled caves before cooling off in beautiful limestone pools

LIVINGSTON (p261)
Immerse yourself in Caribbean culture in this fascinating Caribbean enclave

EL MIRADOR (p308)
Take a three-day hike to this fascinating ancient city

PIEDRAS NEGRAS (p306)
Take a jungle river trip to these fascinating, little-visited ruins

LAGUNA LACHUÁ (p224)
Endure the tough but ultimately rewarding trip to this jungle-fringed lagoon

NEBAL (p153)
Hike the highest highland eco and visit traditional Itz' Maya villages

MEXICO

BELIZE

89°W

90°W

91°W

92°W

93°W

88°W

89°W

90°W

91°W

92°W

93°W

94°W

95°W

96°W

97°W

98°W

99°W

18°N

17°N

16°N

15°N

14°N

13°N

12°N

11°N

10°N

9°N

8°N

7°N

17°W

16°W

15°W

14°W

13°W

12°W

11°W

10°W

9°W

8°W

7°W

6°W

16°W

15°W

14°W

13°W

12°W

11°W

10°W

9°W

8°W

7°W

6°W

5°W

15°W

14°W

13°W

12°W

11°W

10°W

9°W

8°W

7°W

6°W

5°W

4°W

14°W

13°W

12°W

11°W

10°W

9°W

8°W

7°W

6°W

5°W

4°W

3°W

13°W

12°W

11°W

10°W

9°W

8°W

7°W

6°W

5°W

4°W

3°W

2°W

12°W

11°W

10°W

9°W

8°W

7°W

6°W

5°W

4°W

3°W

2°W

1°W

11°W

10°W

9°W

8°W

7°W

6°W

5°W

4°W

3°W

2°W

1°W

0°

10°W

9°W

8°W

7°W

6°W

5°W

4°W

3°W

2°W

1°W

0°

1°E

9°W

8°W

7°W

6°W

5°W

4°W

3°W

2°W

1°W

0°

1°E

2°E

8°W

7°W

6°W

5°W

4°W

3°W

2°W

1°W

0°

1°E

2°E

3°E

7°W

6°W

5°W

4°W

3°W

2°W

1°W

0°

1°E

2°E

3°E

4°E

6°W

5°W

4°W

3°W

2°W

1°W

0°

1°E

2°E

3°E

4°E

5°E

5°W

4°W

3°W

2°W

1°W

0°

1°E

2°E

3°E

4°E

5°E

6°E

4°W

3°W

2°W

1°W

0°

1°E

2°E

3°E

4°E

5°E

6°E

7°E

3°W

2°W

1°W

0°

1°E

2°E

3°E

4°E

5°E

6°E

7°E

8°E

2°W

1°W

0°

1°E

2°E

3°E

4°E

5°E

6°E

7°E

8°E

9°E

1°W

0°

1°E

2°E

3°E

4°E

5°E

6°E

7°E

8°E

9°E

10°E

0°

1°E

2°E

3°E

4°E

5°E

6°E

7°E

8°E

9°E

10°E

11°E

1°E

2°E

3°E

4°E

5°E

6°E

7°E

8°E

9°E

10°E

11°E

12°E

2°E

3°E

4°E

5°E

6°E

7°E

8°E

9°E

10°E

11°E

12°E

13°E

3°E

4°E

5°E

6°E

7°E

8°E

9°E

10°E

11°E

12°E

13°E

14°E

4°E

5°E

6°E

7°E

8°E

9°E

10°E

11°E

12°E

13°E

14°E

15°E

5°E

6°E

7°E

8°E

9°E

10°E

11°E

12°E

13°E

14°E

15°E

16°E

6°E

7°E

8°E

9°E

10°E

11°E

12°E

13°E

14°E

15°E

16°E

17°E

7°E

8°E

9°E

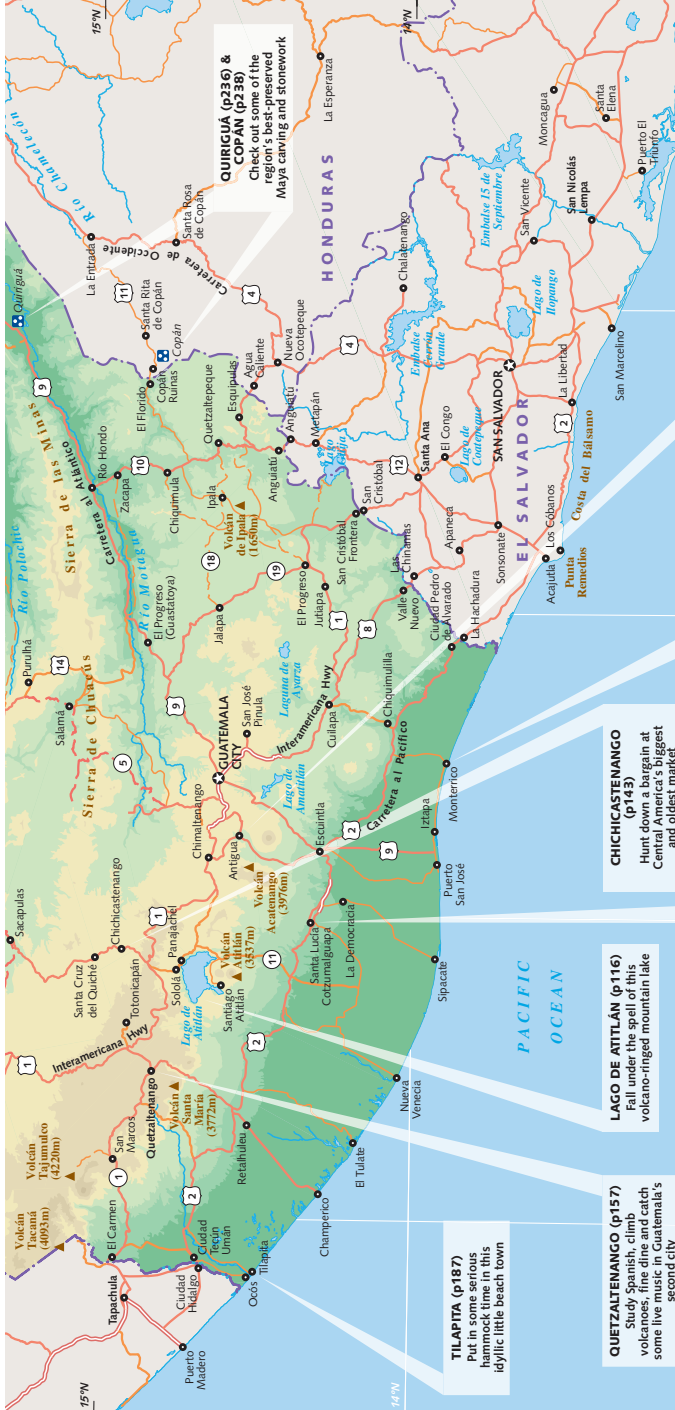
10°E

11°E

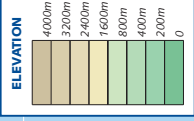
12°E

13°E

14°E



QUIRIGUA (p236) & COPAN (p238)
 Check out some of the region's best-preserved Maya carving and stonework



ANTIGUA (p86)
 Learn some Spanish and get snap happy in Guatemala's prettiest, most cosmopolitan city

MONTERRICO (p201)
 Catch a wave, cruise the mangroves and save a turtle at Guatemala's coastal playground

CHICHICASTENANGO (p143)
 Hunt down a burglar at Central America's biggest and oldest market

SANTA LUCÍA COTZUMALGUAPA (p195)
 Discover the links between the ancient Olmecs and Maya cultures at remote hilltop sites

LAGO DE ATITLÁN (p116)
 Fall under the spell of this volcano-ringed mountain lake



TILAPITA (p187)
 Put in some serious hammock time in this idyllic little beach town

QUETZALTENANGO (p157)
 Study Spanish, climb volcanoes, hike and catch some live fish in Guatemala's second city

15°N 16°N 17°N 18°N 19°N 20°N 21°N 22°N 23°N 24°N 25°N 26°N 27°N 28°N 29°N 30°N 31°N 32°N 33°N 34°N 35°N 36°N 37°N 38°N 39°N 40°N 41°N 42°N 43°N 44°N 45°N 46°N 47°N 48°N 49°N 50°N 51°N 52°N 53°N 54°N 55°N 56°N 57°N 58°N 59°N 60°N 61°N 62°N 63°N 64°N 65°N 66°N 67°N 68°N 69°N 70°N 71°N 72°N 73°N 74°N 75°N 76°N 77°N 78°N 79°N 80°N 81°N 82°N 83°N 84°N 85°N 86°N 87°N 88°N 89°N 90°N 91°N 92°N 93°N 94°N 95°N 96°N 97°N 98°N 99°N 100°N

15°W 16°W 17°W 18°W 19°W 20°W 21°W 22°W 23°W 24°W 25°W 26°W 27°W 28°W 29°W 30°W 31°W 32°W 33°W 34°W 35°W 36°W 37°W 38°W 39°W 40°W 41°W 42°W 43°W 44°W 45°W 46°W 47°W 48°W 49°W 50°W 51°W 52°W 53°W 54°W 55°W 56°W 57°W 58°W 59°W 60°W 61°W 62°W 63°W 64°W 65°W 66°W 67°W 68°W 69°W 70°W 71°W 72°W 73°W 74°W 75°W 76°W 77°W 78°W 79°W 80°W 81°W 82°W 83°W 84°W 85°W 86°W 87°W 88°W 89°W 90°W 91°W 92°W 93°W 94°W 95°W 96°W 97°W 98°W 99°W 100°W

© Lonely Planet. To make it easier for you to use, access to this chapter is not digitally restricted. In return, we think it's fair to ask you to use it for personal, non-commercial purposes only. In other words, please don't upload this chapter to a peer-to-peer site, mass email it to everyone you know, or resell it. See the terms and conditions on our site for a longer way of saying the above - 'Do the right thing with our content.'