

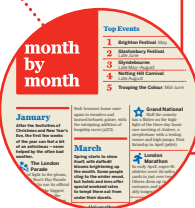
PAGE
2

PLAN YOUR TRIP

YOUR PLANNING TOOL KIT

Photos, itineraries, lists and suggestions
to help you put together your perfect trip

Welcome to England	2
Map	4
20 Top Experiences	6
Need to Know	18
First Time	21
What's New	22
If You Like	23
Month by Month	27
Itineraries	31
Walking in England	36
Travel with Children	42
Regions at a Glance	45



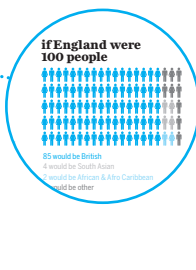
PAGE
763

UNDERSTAND ENGLAND

GET MORE FROM YOUR TRIP

Learn about the big picture, so you
can make sense of what you see

England Today	764
History	766
The English Table	782
Architecture in	
England	789
The English	
Landscape	793
The Arts	800
Sporting England	808



ISBN 978-1-74220-050-7



9 781742 200507

5 2 4 9 9





Directory A-Z	812
Transport	820
Glossary	826
Index	830
Map Legend	846



THIS EDITION WRITTEN AND RESEARCHED BY

David Else,

**Oliver Berry, Fionn Davenport, Marc Di Duca, Belinda Dixon,
Damian Harper, Anna Kaminski, Catherine Le Nevez, Neil Wilson**

➤ **Every listing is recommended by our authors, and their favourite places are listed first**

➤ **Look out for these icons:**



Our author's top recommendation



A green or sustainable option



No payment required

On the Road

LONDON52	Cornwall.....368	Yorkshire Dales National Park 597
CANTERBURY & THE SOUTHEAST138	Isles of Scilly..... 397	West Yorkshire 606
Kent 139	CAMBRIDGE & EAST ANGLIA402	South Yorkshire 618
East Sussex..... 162	Cambridgeshire 406	East Riding of Yorkshire.. 621
West Sussex181	Essex 423	MANCHESTER, LIVERPOOL & THE NORTHWEST.....627
Surrey.....185	Suffolk 428	Manchester..... 630
OXFORD, COTSWOLDS & AROUND.....188	Norfolk..... 437	Cheshire..... 646
Oxfordshire191	NOTTINGHAM & THE EAST MIDLANDS ... 451	Liverpool 653
The Cotswolds 207	Nottinghamshire 454	Around Liverpool 664
Gloucestershire 224	Lincolnshire 461	Lancashire..... 665
Hertfordshire233	Northamptonshire..... 472	Isle of Man..... 669
Bedfordshire & Buckinghamshire.....235	Leicestershire & Rutland 473	THE LAKE DISTRICT & CUMBRIA.....673
Berkshire.....236	Derbyshire.....480	The Lake District 677
WESSEX.....242	Peak District 486	Cumbrian Coast 710
Hampshire..... 246	BIRMINGHAM, THE WEST MIDLANDS & THE MARCHES 499	Northern & Eastern Cumbria..... 715
New Forest National Park 258	Birmingham 502	NEWCASTLE & THE NORTHEAST 721
Isle of Wight 262	Warwickshire 513	Newcastle-upon-Tyne 725
Dorset 267	Staffordshire..... 524	Around Newcastle 734
Wiltshire..... 286	Worcestershire 530	County Durham 734
Bristol.....300	Herefordshire 534	Hadrian's Wall..... 744
Bath 312	Shropshire..... 542	Northumberland National Park 751
Somerset.....323	YORKSHIRE..... 561	Northumberland Coast 754
Exmoor National Park 332	North Yorkshire..... 565	
DEVON & CORNWALL.....339	North York Moors National Park 588	
Devon.....342		





Stratford-upon-Avon
See a Shakespeare play at the Bard's birthplace (p518)

Oxford
Wonder at archaic colleges and traditions (p191)

The Cotswolds
Enjoy classic chocolate-box English countryside (p207)

Bath
Admire beautiful Georgian architecture (p312)

Cambridge
Attempt to punt on the picturesque 'Backs' (p406)

Canterbury
Be awed by its historic place of worship (p142)

Seven Sisters
Stroll across England's iconic white cliffs (p169)

London
Linger in London's world-class attractions (p52)

Stonehenge
Go mystic at England's famous prehistoric site (p291)

Eden Project
Marvel at Cornwall's three gigantic greenhouses (p394)

FRANCE
Rouen
Le Havre

**Marc Di Duca**

Canterbury & the Southeast Originally from Darlington, County Durham, Marc has been a northerner-gone-south since 2000 and covered his adopted corner of weald and down for the past two editions of Lonely Planet's *England and Great Britain*. A travel author for eight years, Marc has updated and written the Lonely Planet guides of *Ukraine, Russia, Trans-Siberian Railway, Poland and Germany*, though he can usually be found in Sandwich, Kent, where he lives with his Kievite wife Tanya and their two sons.

Read more about Marc at:
lonelyplanet.com/members/madidu

**Belinda Dixon**

Part of Wessex; Devon Belinda made a gleeful bolt for the sunny southwest for her post-grad, having been drawn there by the palm trees on campus. Like the best Westcountry limpets she's proved hard to shift since and now writes and broadcasts in the region. Research highlights for this book included kayaking up (and riding the tide down) the River Dart, hugging sarsen stones at Avebury, taking time out in Ilfracombe and oh-so-diligently testing the pick of Plymouth's newest eateries.

**Damian Harper**

London; Birmingham, the West Midlands & the Marches Born in London and growing up in Notting Hill, Damian went to school in Hampshire for a decade, cultivating a sense of affection for both city and country. Writing for Lonely Planet for more than 15 years, Damian recently turned his attention from far-flung cultures to his lush and well-watered homeland, revelling in England's diversity, good looks, insular charms, awe-inspiring sense of history and entirely intelligible local tongue (in the main).

**Anna Kaminski**

Oxford, Cotswolds & Around; Cambridge & East Anglia Anna's love affair with England began in 1991 once she got over the shock of moving from the Soviet Union to Cambridge – her home for the next 20 years. Since budget flights hadn't been invented at the time, her parents tirelessly tried to instil some culture in her by taking her to every museum, castle, church and stately home in a 250-mile radius, most of which she revisited with great pleasure during this research trip. Memorable

moments from her most recent trip include slurping fresh oysters in Aldeburgh, driving along some impossibly narrow country lanes in the Cotswolds and getting acquainted with Oxford's ghosts.

**Catherine Le Nevez**

Nottingham & the East Midlands Catherine first roadtripped around England aged four and she's been roadtripping here at every opportunity since, completing her Doctorate of Creative Arts in Writing, Masters in Professional Writing, and post-grad qualifications in Editing and Publishing along the way, as well as dozens of Lonely Planet guidebooks and newspaper, magazine and online articles throughout the UK, Europe and beyond. Roaming castle ruins and corridors of stately homes were the highlights of researching this book, as was discovering idyllic countryside pubs.

**Neil Wilson**

Yorkshire From rock climbing trips to Yorkshire gritstone, to weekend getaways in York and Whitby, Neil has made many cross-border forays into 'God's own country' from his home in Scotland. Whether hiking across the high tops of the Yorkshire Dales, savouring Britain's best fish and chips on the Whitby waterfront, or worshipping at the fountainhead of Theakston's Ales in Masham, he's never short of an excuse for yet another visit. Neil is a full-time travel writer based in

Edinburgh, and has written more than 40 guidebooks for various publishers, including previous Lonely Planet editions of *England*.



OUR STORY

A beat-up old car, a few dollars in the pocket and a sense of adventure. In 1972 that's all Tony and Maureen Wheeler needed for the trip of a lifetime – across Europe and Asia overland to Australia. It took several months, and at the end – broke but inspired – they sat at their kitchen table writing and stapling together their first travel guide, *Across Asia on the Cheap*. Within a week they'd sold 1500 copies. Lonely Planet was born.

Today, Lonely Planet has offices in Melbourne, London and Oakland, with more than 600 staff and writers. We share Tony's belief that 'a great guidebook should do three things: inform, educate and amuse'.

OUR WRITERS



David Else

Coordinating Author As a professional writer, David has authored more than 40 books, including several editions of Lonely Planet's *England* and *Great Britain* guides. His knowledge comes from a lifetime of travel around the country – often on foot or by bike – a passion dating from university years, when heading for the hills was always more attractive than visiting the library. Originally from London, David has lived in Yorkshire and Derbyshire, and is now a resident of the Cotswolds. For this current edition of *England*, David's research took him from the Isle of Wight in the south, to Hadrian's Wall in the north – via most of the bits in between.

Read more about David at:
lonelyplanet.com/members/davidelse



Oliver Berry

Part of Wessex; Cornwall; the Lake District Oliver is a writer and photographer based in Cornwall. Among many other projects for Lonely Planet, Oliver has written the first editions of *Devon*, *Cornwall & Southwest England* and *The Lake District*, and worked on several previous editions of the *England* and *Great Britain* guides. You can see some of his latest work at www.oliverberry.com and follow him at [www.twitter.com/olivertomberry](https://twitter.com/olivertomberry).

Read more about Oliver at:
lonelyplanet.com/members/oliverberry



Fionn Davenport

Manchester, Liverpool & the Northwest; Newcastle & the Northeast Fionn has been traipsing about Northern England's bigger burbs for over a decade and has found that the cities of the north are simply fantastic; a rich repository of culture, fine museums, terrific restaurants and – most importantly – peopled by a few million lovable gruffs that exude a no-nonsense warmth. Working on recent editions of *England* has afforded him the opportunity to watch these re-

gions find a myriad interesting ways to reinvent themselves in the face of constant economic challenges. And, when he needs a little bit of greenery, he just skips out to northern Lancashire or the Northumberland coast for a bit of bucolic R&R. Fionn is a full-time travel writer and broadcaster based in Dublin, Ireland – you can catch him on Newstalk 106-108 (www.newstalk.ie).

OVER MORE PAGE WRITERS

Published by Lonely Planet Publications Pty Ltd

ABN 36 005 607 983

7th edition – Mar 2013

ISBN 978 1 74220 050 7

© Lonely Planet 2013 Photographs © as indicated 2013

10 9 8 7 6 5 4 3 2 1

Printed in Singapore

All rights reserved. No part of this publication may be copied, stored in a retrieval system, or transmitted in any form by any means, electronic, mechanical, recording or otherwise, except brief extracts for the purpose of review, and no part of this publication may be sold or hired, without the written permission of the publisher. Lonely Planet and the Lonely Planet logo are trademarks of Lonely Planet and are registered in the US Patent and Trademark Office and in other countries. Lonely Planet does not allow its name or logo to be appropriated by commercial establishments, such as retailers, restaurants or hotels. Please let us know of any misuses: lonelyplanet.com/ip.

Although the authors and Lonely Planet have taken all reasonable care in preparing this book, we make no warranty about the accuracy or completeness of its content and, to the maximum extent permitted, disclaim all liability arising from its use.

itineraries

Whether you've got six days or 60, these itineraries provide a starting point for the trip of a lifetime. Want more inspiration? Head online to lonelyplanet.com/thorntree to chat with other travellers.



Eight to 10 days England Express

In just over a week you can still see many of England's highlights. Start with a full day in the capital, **London**, simply walking the streets to admire the world-famous sights: Buckingham Palace, Tower Bridge, Trafalgar Square and more. Then head west for one or both of the grand cathedral cities of **Winchester** and **Salisbury**. Next stop: ancient history – the iconic menhirs of **Stonehenge**.

A short hop northwest is the beautiful historic city of **Bath**, for Roman history and fabulous Georgian architecture. Then cruise across the classic English countryside of the **Cotswolds** to reach that ancient seat of learning, **Oxford**. Not far away is **Stratford-upon-Avon**, for everything Shakespeare.

Next, strike out north for the **Lake District**, one of the country's most scenic areas, then across to **York** for Viking remains and the stunning Minster. End your trip with a visit to **Cambridge**, England's other great university city. Then a final day back in **London**, immersed in galleries, museums, luxury shops, street markets, West End shows or East End cafes – or whatever takes your fancy.



One month The Full Monty

With a month to spare you can enjoy taking in all the very best that England offers. Kick off in **London** and spend a couple of days seeing the big-name attractions. Make the time for no-fixed-program saunters as well – along the south bank of the River Thames, or through the markets of the East End. Next, go down to the sea and the buzzy coast-resort **Brighton**; then west, via **Portsmouth** for the historic harbour, to reach the picturesque **New Forest**. From the coast head inland to the grand cathedral cities of **Winchester** and **Salisbury**, and on to England's best-known ancient site, **Stonehenge**, and nearby **Avebury Stone Circle** – bigger than Stonehenge and a more intimate experience.

Onwards into deepest Wessex, via Thomas Hardy's hometown, **Dorchester**, to reach the neat little city of **Exeter** and the wide and wild expanse of **Dartmoor National Park**. Then it's time for yet another historic city, **Wells**, with its beautiful cathedral, en route to the Georgian masterpiece of **Bath** and the southwest's big little city, **Bristol**. Next comes the classic English countryside of the **Cotswolds**, with a stop at delightful Stow-on-the-Wold, and maybe Broadway or Chipping Campden, before reaching **Oxford**, England's original seat of learning. Not far away is Shakespeare Central at **Stratford-upon-Avon** – tie in your visit here with seeing a play by the Bard himself. Continue journeying north via the heather-clad moors and tranquil limestone dales of the **Peak District** to reach England's second city, **Manchester**, and neighbouring cultural crossroads **Liverpool**.

Then it's back to the wilds again with a short hop to the scenic wonders of the **Lake District**. From the sturdy border town of **Carlisle**, follow the ancient Roman landmark of **Hadrian's Wall** all the way to revitalised **Newcastle-upon-Tyne**. Then it's into the home stretch, south via **Durham** and its world-class cathedral, and then **York** for its Viking remains and stunning Minster, to reach **Cambridge**, England's other great university city. From here it's a hop back to **London**, to use up the last few days of your grand tour taking in highlights such as Trafalgar Square, the National Gallery, Tate Modern and Tower of London, all polished off with a stroll across Westminster Bridge as Big Ben chimes the hour.



Two to three weeks The Wild Side

This is a tour through the best of England's natural landscape, the inspiration for generations of poets, writers and composers. So put on your hiking boots, or have a camera at the ready, as we take a northeast-southwest meander through some of the country's finest national parks and stretches of open countryside.

Start at the spectacular Roman remains of **Hadrian's Wall**, one of England's finest reminders of the classical era, where you can explore the ancient forts and stride beside the ramparts centurion-style. Then continue into **Cumbria** for the high peaks of the **Lake District**, once the spiritual home of Wordsworth and the Romantic poets, now a mecca for outdoor fans, with hikes and strolls for all abilities, beautiful vistas of lakes, plus cosy inns and traditional country hotels.

Travelling east from the Lakes carries you across the **Pennines** – the chain of hills known as the backbone of England – to reach the green hills and valleys of the **Yorkshire Dales**. Nearby are the moors around **Haworth** – inspiration for Emily Brontë's *Wuthering Heights*.

Travel south through the hills and dales of the **Peak District**, stopping off to explore the great estate around Chatsworth if time allows, then through central England (via Elgar's beloved **Malvern Hills**) to reach the classic English countryside of the **Cotswolds**. Then continue southwards again to enjoy the epic emptiness of **Salisbury Plain**, home to **Stonehenge** and other archaeological intrigues. Nearby is **Avebury**, England's other great stone circle. A few miles more and you're on Dorset's spectacular fossil-ridden **Jurassic Coast**.

Then head into England's toe, the Westcountry Peninsula, jutting deep into the Atlantic. Take in the lush farmland of Devon and the heathery hills and sandy coves of **Exmoor**, then it's on to the eerie granite tors of **Dartmoor**, offering some of the country's most bleakly beautiful views. Next stop: Cornwall, for pretty ports, gorse-clad cliffs and sparkling bays. Then finish this bucolic excursion at **Land's End**, where the English mainland finally runs out of steam and plunges headlong into the restless ocean.



Two to three weeks Heart of England

This journey through England's central regions starts in **London**, with its biggest landmarks: Trafalgar Square, Westminster Abbey, the Tower of London, St Paul's Cathedral and Buckingham Palace. Out of the centre, the gorgeous gardens at Kew, Eton College and **Windsor Castle** are also must-see sights.

Beyond the capital is old England proper, especially around the market towns of Kent, where **Canterbury Cathedral** and **Leeds Castle** are top architectural spots.

Then loop through Sussex and into Hampshire, where **Winchester**, the ancient capital, boasts another fine cathedral. Jostling for prominence is nearby **Salisbury**, with its famous cathedral spire dominating the landscape for miles around.

Out to the west, **Bath** is crammed with landmark English architecture, while the picture-perfect **Cotswolds** conceal a host of pretty towns and villages, such as Northleach, **Cirencester** and Wantage, as well as the grand stately home of Blenheim Palace. On to **Oxford**, one of the country's great centres of learning, and **Stratford-upon-Avon**, home of Shakespeare. There's just time to top up on English history at stunning **Warwick Castle**.

Eight to 10 days Urban Adventure

Beyond London, England's cities are a vibrant counterpoint to the tranquil coast and countryside. Start in **Bristol**, a thriving regional capital famed for its engineering heritage and lively cultural scene. Then to **Birmingham**, in the heart of the Midlands, once forlorn and now a byword for successful urban renewal.

Continue north to reach **Manchester**, famous for its music and football team, where architectural highlights include the stunning Imperial War Museum North. Nearby **Liverpool** is reinventing itself as a cultural capital, with the redevelopment most apparent at the historic waterfront, Albert Dock.

Cross the **Pennines** to reach **Leeds**, the 'Knightsbridge of the North' where run-down factories and abandoned warehouses are now loft apartments and ritzy boutiques. But don't forget the past: go underground at the **National Coal Mining Museum**.

Further north is **Newcastle-upon-Tyne** and neighbouring Gateshead, former kings of coal, ships and steel, where heavy industry has given way to art and architecture, most notably the BALTIC contemporary gallery, and the Sage concert hall. Conclude your urban tour with a visit to England's best-known public art, the iconic **Angel of the North**.

© Lonely Planet Publications Pty Ltd. To make it easier for you to use, access to this chapter is not digitally restricted. In return, we think it's fair to ask you to use it for personal, non-commercial purposes only. In other words, please don't upload this chapter to a peer-to-peer site, mass email it to everyone you know, or resell it. See the terms and conditions on our site for a longer way of saying the above - 'Do the right thing with our content.'