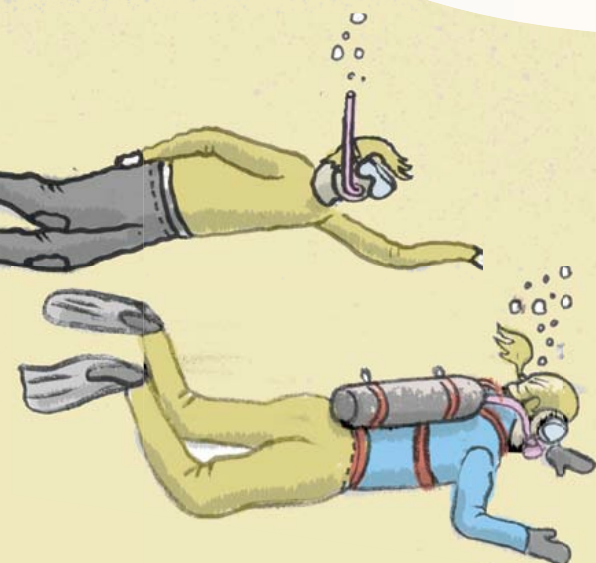
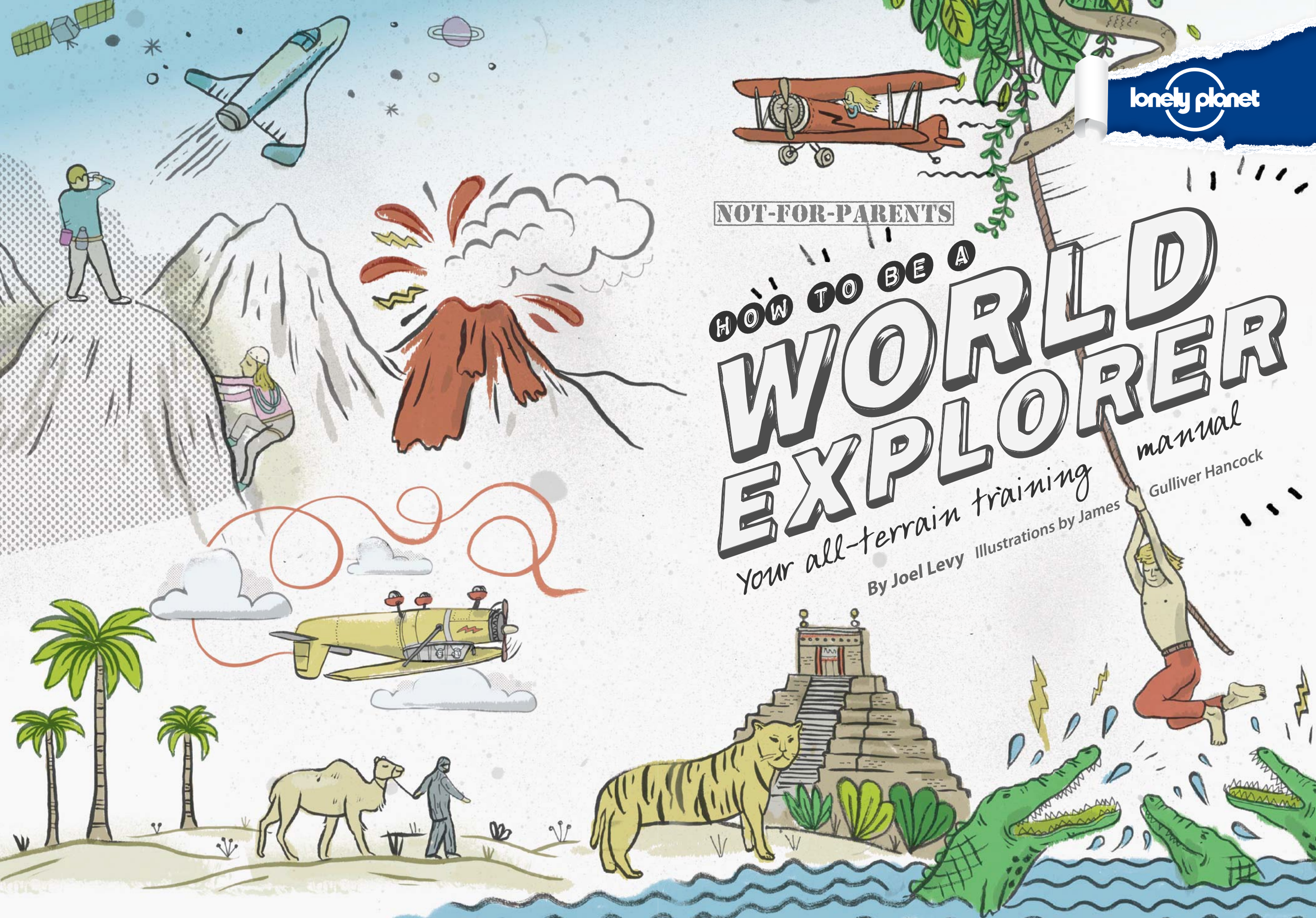


NOT-FOR-PARENTS

HOW TO BE A WORLD EXPLORER

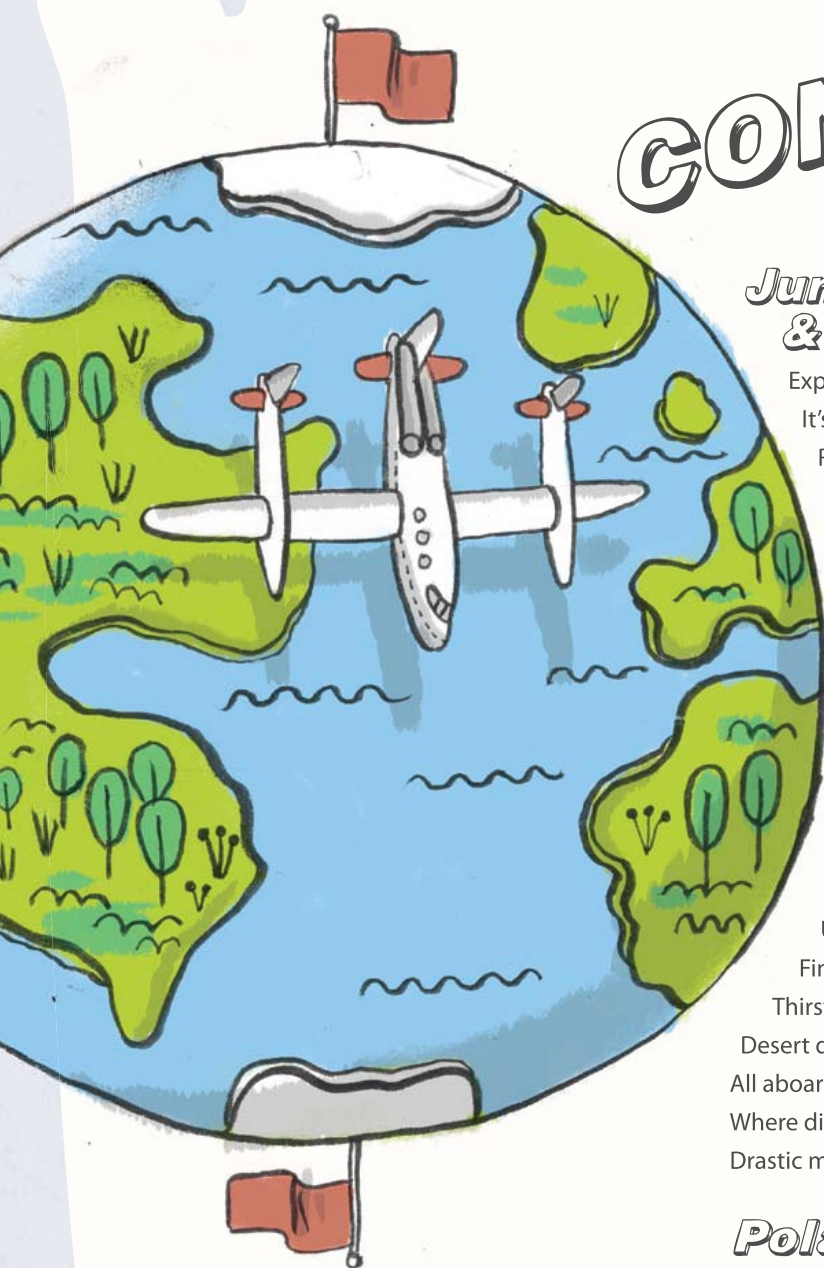
Your all-terrain training manual





NOT-FOR-PARENTS

HOW TO BE A
**WORLD
EXPLORER**
manual
Your all-terrain training
By Joel Levy Illustrations by James Gulliver Hancock



CONTENTS

Jungle & Savannah **6**

Explorer's quest	8
It's a jungle out there	10
River monsters	12
Blood suckers and skin stingers	14
Lost cities of gold	16
Jungle survivors	18
How to escape from quicksand	20
Jungle jumbos	22
Bite back	24
Big game	26
Great white hunters	28

Desert **30**

Explorer's quest	32
Unexpected deserts	34
Finding water	36
Thirst quenchers	38
Desert dangers	40
All aboard the ship of the desert	42
Where did you get that hat?	44
Drastic measures	46

Polar **48**

Explorer's quest	50
Meet the locals – Inuit	52
Home sweet dome	54
The polar express	56
Bears and bites	58
Race to the pole	60

Forest & Mountain **62**

Explorer's quest	64
Big bad beasts	66
Fruits of the forest	68
Meet the locals – Sherpas	70
Up, up and away	72
Avalanche!	76
The Death Zone	78
How to abseil into a volcano	80
Explorers on Everest	82
Alive!	84

Oceans & Rivers **86**

Explorer's quest	88
Vessels of discovery	90
Meet the locals – Polynesians	92
Ocean dangers	94
Lost at sea	96
Desert island survival	98
To boldly go...	100
Under the sea	102
River dangers	104
Types of river boats and rafts	106
Rolling on the river	108
Getting their feet wet	110

Air **112**

Explorer's quest	114
Up, up and away	116
What goes up...	118
Afraid of heights	120
How to land a plane in an emergency	122
Cold air	124

Navigation **126**

Map reading	128
True north	130
Compass 101	132
Stay the course	134
Navigating by the stars	136

Explorer Bootcamp **140**

Explorer's essentials	142
The rule of threes	144
Fire starter	146
Camping out	148
Weather wise	150
Storm warning	152

Index	154
Acknowledgments	160



JUNGLE & SAVANNAH

You're hacking your way through the jungle with your machete, when suddenly the ground gives way and you slide down a muddy ravine, tumbling through a giant spider's web and into a pool of deadly quicksand. The crumbling ruins of an ancient temple loom on either side. Should you call for your elephant or grab a vine and haul yourself out?

Can you find a lost jungle temple?

Discover how to ride an elephant on page 22.

Can you fight a lion?
See page 27.

Mbuti pygmies -
big in the jungle.

Watch out for piranhas!
See page 13.

Get jumping to the
Masai rhythms!



EXPLORER'S QUEST

The tropical regions of the world, with their thick jungles and wide, grassy savannahs, are rich in exotic animals and unsolved mysteries – in other words, they are perfect for explorers. Will you track down the lost treasure city of the Inca or find the source of the Nile?

Lost city of the Inca

In the early 1500s the Spanish conquistador Francisco Pizarro conquered the Inca empire, but some Inca escaped over the mountains into the Amazon rainforest, taking with them a vast fortune in gold. Adventurers and explorers have long believed that they founded a secret city in the jungle, which might yet contain a fabulous treasure beyond belief. Can you discover the lost city when so many others have died trying?



Welcome to the world

Thousands of tribes make the thick jungles of the world their home – some are so remote and isolated that they have never been contacted by the modern world. Can you be the first to introduce yourself to an uncontacted tribe?



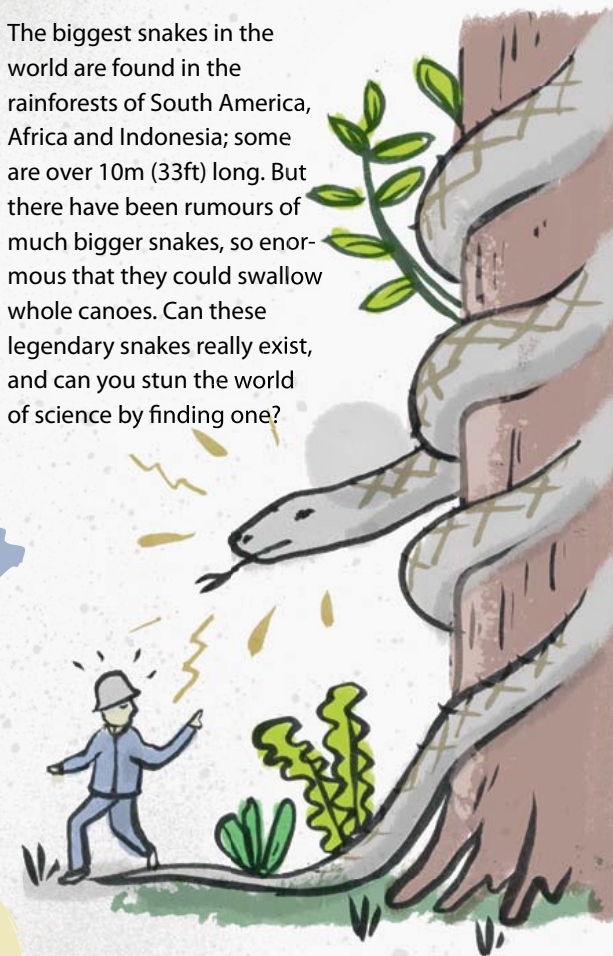
Finding the source

Victorian explorers were obsessed with tracing the course of the world's longest river – the Nile – and discovering its source deep in the African interior. Can you retrace their footsteps and make the exciting journey across the 'Mountains of the Moon'?



Monster snakes

The biggest snakes in the world are found in the rainforests of South America, Africa and Indonesia; some are over 10m (33ft) long. But there have been rumours of much bigger snakes, so enormous that they could swallow whole canoes. Can these legendary snakes really exist, and can you stun the world of science by finding one?

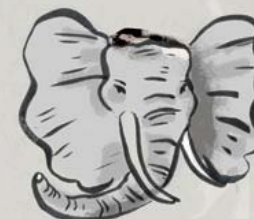


Big game

For the big game hunters who visited Africa looking for animal heads to stick on their walls, nothing compared to the 'Big Five' – the animals considered most dangerous and difficult to hunt: lion, elephant, leopard, rhino and buffalo. Can you track them down and shoot them in a different way – with your camera?



Lion



Elephant



Leopard



Rhino



Buffalo

IT'S A JUNGLE OUT THERE

Jungle terrain is difficult to move through, and the combination of heat and constant rain makes it very uncomfortable – as do the swarms of insects.

Jungle anatomy

This illustration shows how the jungle is divided into vertical levels, with giant trees forming a thick canopy that blocks out most of the light. Down at ground level the plants are crowded together, making it hard to move around; your machete is the most important piece of kit you have!

How to use a machete

A machete is a long-bladed knife for slashing a path through leaves and vines. Get your technique right or you will waste precious energy and take too long to get through the jungle. Always cut at an angle, and keep your wrist parallel to the cut. Chop down to cut through stems and vines, and up to cut through leaves. Follow a three-step cut:

- 1 Let your shoulder drop
- 2 Lead with your elbow
- 3 Flick your wrist at the last second



Emergent layer

Canopy layer

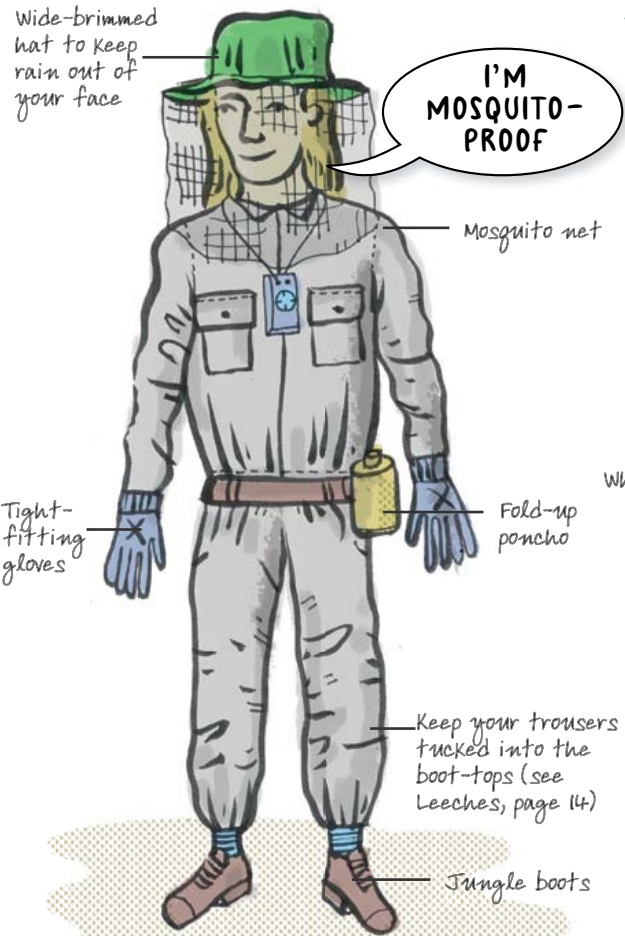
Understory layer

Immature layer

Herb layer

Jungle Kit

You need clothes and kit that will cope with heat, constant rain and insects. Clothes need to be light and loose to keep you cool, tough so that they don't get shredded by thorns and spikes, and quick-drying so that you're not constantly damp.



MEET THE LOCALS

MBUTI PYGMIES

The Mbuti live in the jungles of central Africa. They are pygmies, or short people. Although they do not write things down, they learn and remember everything there is to know about the plants and animals of their jungle home. They are expert at hunting. Some hunt with bows and arrows, others use nets. The Mbuti do not live in villages or towns; they build huts from plants and leave them behind when they need to move on to a new part of the jungle. Their favourite food is honey, which they scoff in large amounts whenever they find it.

